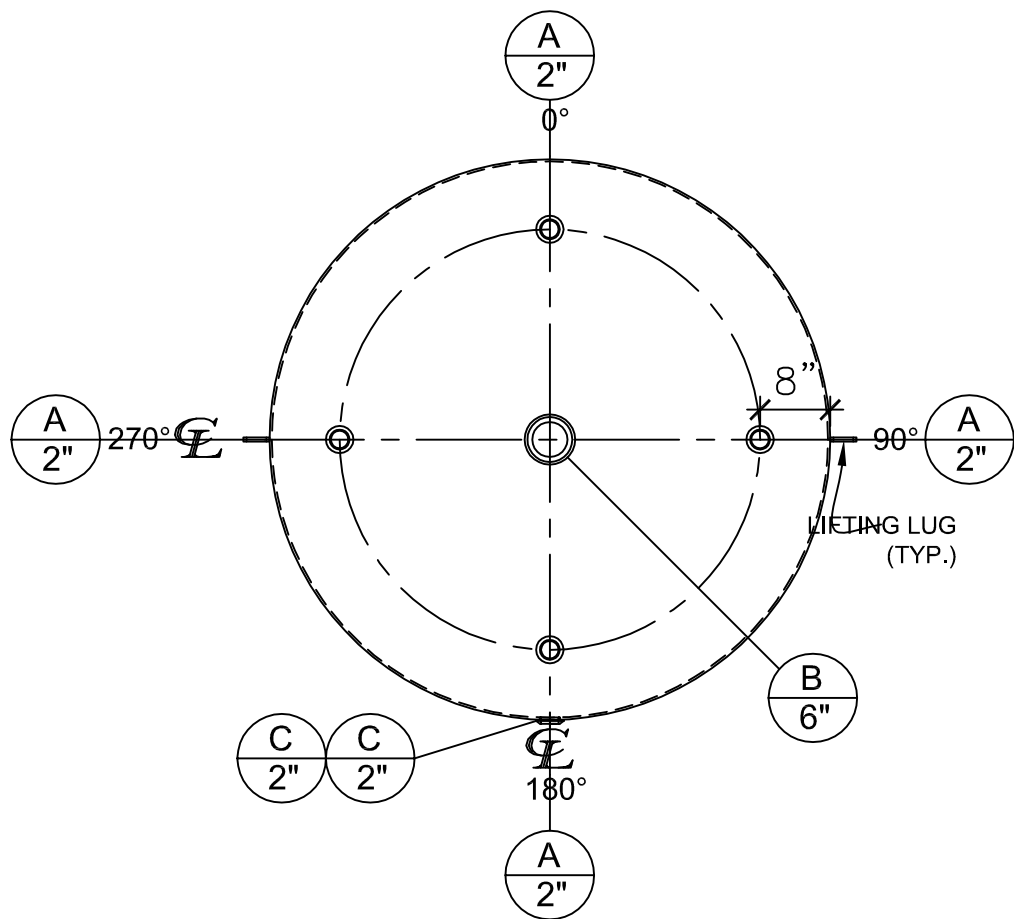


**FRONT VIEW**


NOZZLE SCHEDULE								
ITEM	SIZE	RATING	TYPE	MATL	PROJ. IN	PROJ. OUT	REMARKS	NOTES
A	2"	N.P.T.	CPL.	C.S.	STD.	STD.	-	-
B	6"	N.P.T.	H.CPL.	C.S.	STD.	STD.	-	EMERGENCY VENT OPENING
C	2"	N.P.T.	W.F.	C.S.	STD.	STD.	-	-



**PLAN VIEW**

**NOTES:**

- A. Quantity: One
- B. Material: H.R. Carbon Steel.
- C. Design Pressure: Atmospheric.
- D. Design Temperature: Ambient.
- E. Built & labeled per U.L. spec. #142.
- F. Exterior: one coat gray primer.
- G. All fittings to be protected for shipment.
- H. Customer to verify nozzle sizes, locations and quantities.

<b>FOR APPROVAL</b>			<b>SALES ORDER#</b>		
APPROVAL FOR CONSTRUCTION PLEASE SIGN AND RETURN:			 Phone: 870-735-4473 Fax: 870-735-3982		
<input type="checkbox"/> APPROVED AS DRAWN. <input type="checkbox"/> APPROVED WITH NOTED CHANGES, CONSTRUCTION WILL BE SCHEDULED WHEN SIGNED DRAWING AND CONFIRMED ORDER ARE RECEIVED.			VESSEL DESCRIPTION: 1000 Gallon 64" I.D. x 6'-0" Shell Height Single Wall Vertical Tank		
SIGNATURE: _____			CUSTOMER: _____		P.O.# _____
DATE: _____			SCALE: _____	DWG.# NB01000SWV06410G	DRAWN BY: TC CHKD. BY: _____