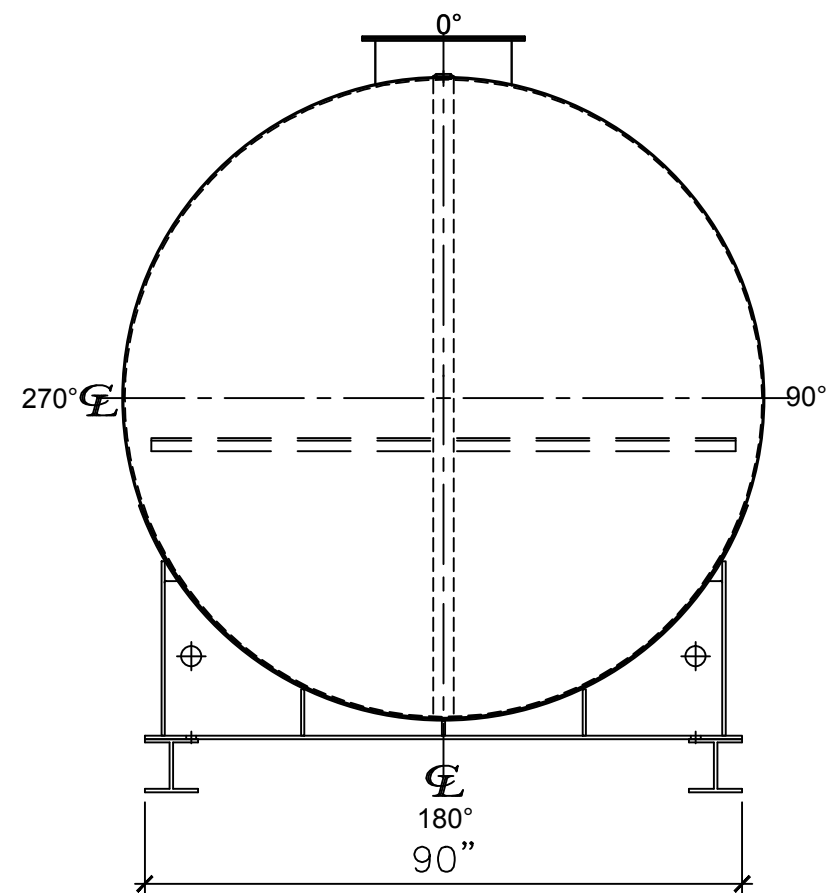
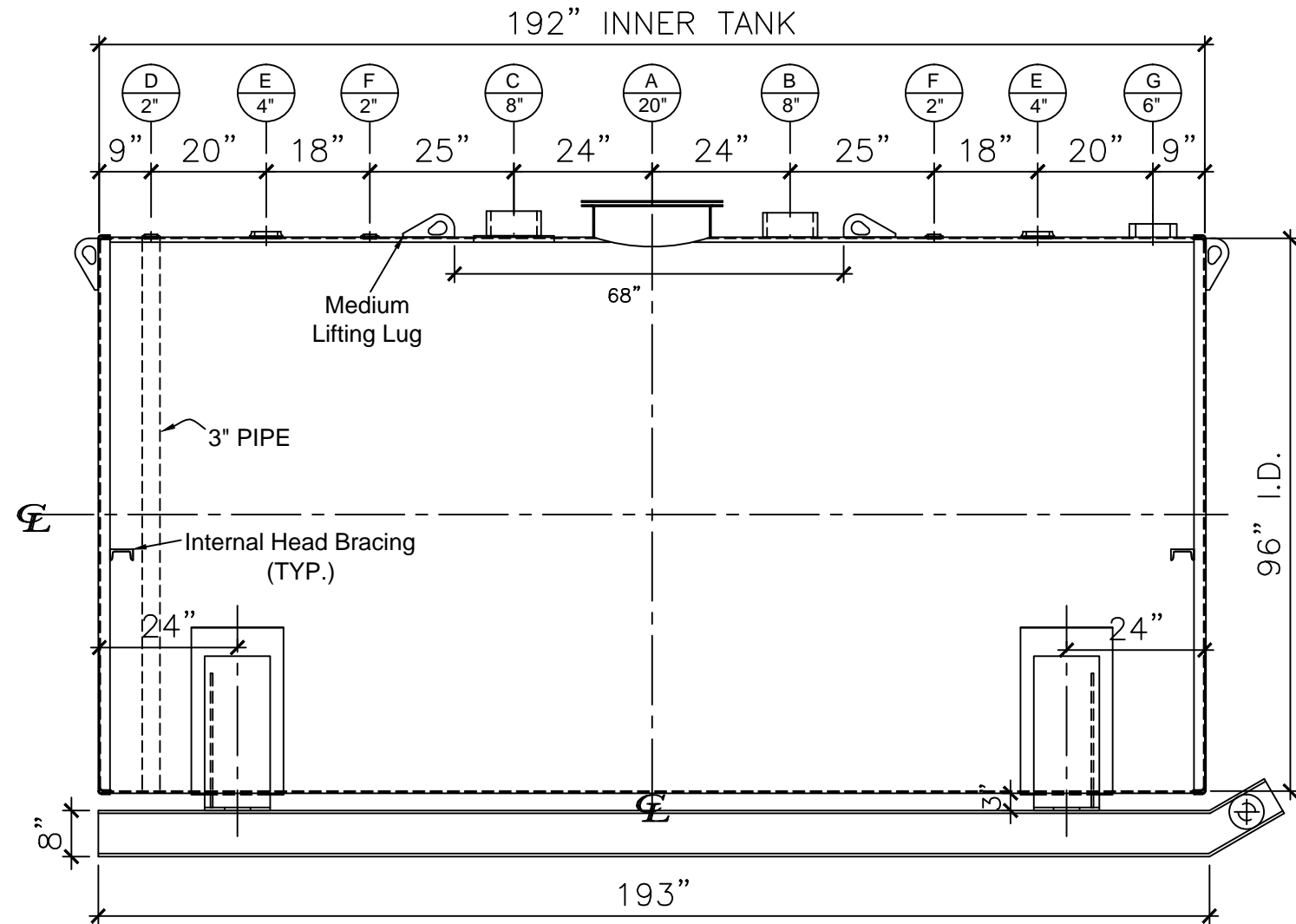


| NOZZLE SCHEDULE |      |        |         |      |                |                        |
|-----------------|------|--------|---------|------|----------------|------------------------|
| ITEM            | SIZE | RATING | TYPE    | MATL | REMARKS        | NOTES                  |
| A               | 20"  | U.L.   | M.W.    | C.S. | SINGLE PUNCHED | TIGHT BOLTED           |
| B               | 8"   | N.P.T. | H. CPL. | C.S. | PRIMARY        | EMERGENCY VENT OPENING |
| C               | 8"   | N.P.T. | H. CPL. | C.S. | SECONDARY      | EMERGENCY VENT OPENING |
| D               | 2"   | N.P.T. | M.F.    | C.S. | -              | MONITORING PORT        |
| E               | 4"   | N.P.T. | W.F.    | C.S. | -              | -                      |
| F               | 2"   | N.P.T. | W.F.    | C.S. | -              | -                      |
| G               | 6"   | N.P.T. | H.CPL.  | C.S. | -              | -                      |



LEFT SIDE



FRONT VIEW

**NOTES:**

- A. Quantity:
- B. Material: H.R. Carbon Steel.
- C. Design Pressure: Atmospheric.
- D. Design Temperature: Ambient.
- E. Built & labeled per U.L. spec. #142.
- F. Exterior: Gray primer included; see Sales Order for top coat.
- G. All fittings to be protected for shipment.
- H. Customer to verify nozzle sizes, locations and quantities.
- I. Saddles/skids may require shimming or grouting during installation.

\*All pages of this Schedule A are incorporated by reference and are a part of the additional terms of the Master Terms & Conditions of Sale.  
[www.newberrytanks.com/masterterms.pdf](http://www.newberrytanks.com/masterterms.pdf)

APPROVAL FOR CONSTRUCTION  
 SCHEDULE A - MASTER TERMS &  
 CONDITIONS OF SALE\*


APPROVED AS DRAWN.

APPROVED WITH NOTED CHANGES,  
 CONSTRUCTION WILL BE SCHEDULED  
 WHEN SIGNED DRAWING AND  
 CONFIRMED ORDER ARE RECEIVED.

SIGNATURE: \_\_\_\_\_

DATE: \_\_\_\_\_

SALES ORDER#

  
 Phone: 870-735-4473 Fax: 870-735-3982

VESSEL DESCRIPTION:  
 6000 Gallon 96" I.D. x 16'-0" O.A.L. Double Wall Skid Tank

CUSTOMER: \_\_\_\_\_ P.O.# \_\_\_\_\_

DATE: \_\_\_\_\_ SCALE: \_\_\_\_\_ DWG.# NB06000DWS096250 DRAWN BY: TC  
 CHKD. BY: \_\_\_\_\_

This drawing may contain CONFIDENTIAL information and is intended only for the use of the specific individual(s) to which it is addressed.