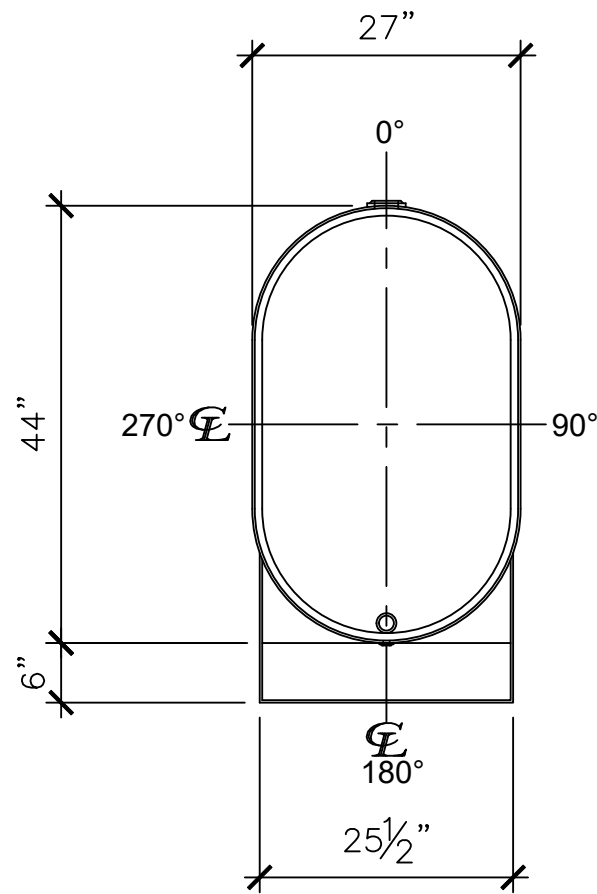
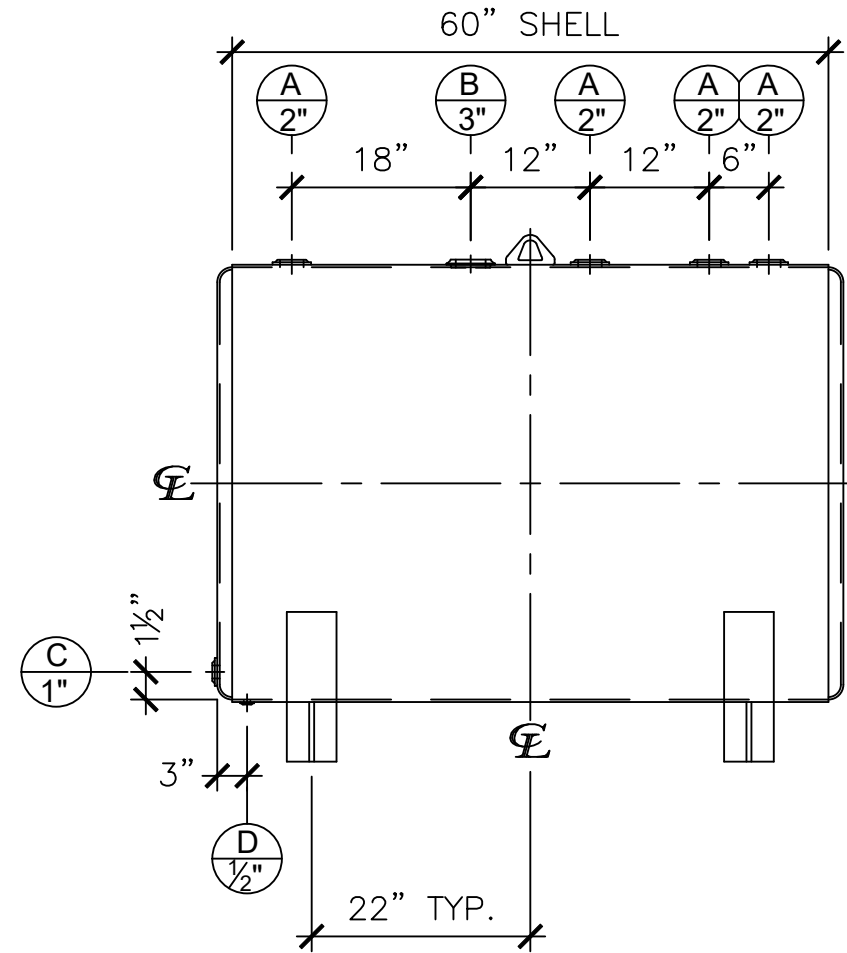


**NOZZLE SCHEDULE**

ITEM	SIZE	RATING	TYPE	MATL	REMARKS	NOTES
A	2"	N.P.T.	W.F.	C.S.		
B	3"	N.P.T.	W.F.	C.S.		EMERGENCY VENT
C	1"	N.P.T.	W.F.	C.S.		
D	1/2"	N.P.T.	W.F.	C.S.		DRAIN



**LEFT SIDE**



**FRONT VIEW**

**NOTES:**

- A. Material: H.R. Carbon Steel.
- B. Design Pressure: Atmospheric.
- C. Design Temperature: Ambient.
- D. Exterior: One coat gray primer.
- E. All Fittings to be protected for shipment.
- F. Customer to verify nozzle sizes, locations, and quantities.

APPROVAL FOR CONSTRUCTION  
SCHEDULE A - MASTER TERMS & CONDITION OF SALE\*

APPROVED AS DRAWN.

APPROVED WITH NOTED CHANGES. CONSTRUCTION WILL BE SCHEDULED WHEN SIGNED DRAWING AND CONFIRMED ORDER ARE RECEIVED.

SIGNATURE: \_\_\_\_\_

DATE: \_\_\_\_\_

\*All pages of this Schedule A are incorporated by reference and are a part of the additional terms of the Master Terms & Conditions of Sale. www.newberrytanks.com/masterterms.pdf

<b>SALES ORDER:</b>		WEIGHT (LBS): 325
		All units inches unless stated otherwise
Phone: 870-735-4473		
<b>DESCRIPTION:</b>		
275 Gallon Basement Tank w/ 6" Riser		
CUSTOMER:	P.O.#	
DATE: 02/08/23	SCALE:	DWG.# NB00275BMT003006
		DRAWN BY: WR
		SHEET 1 OF 1