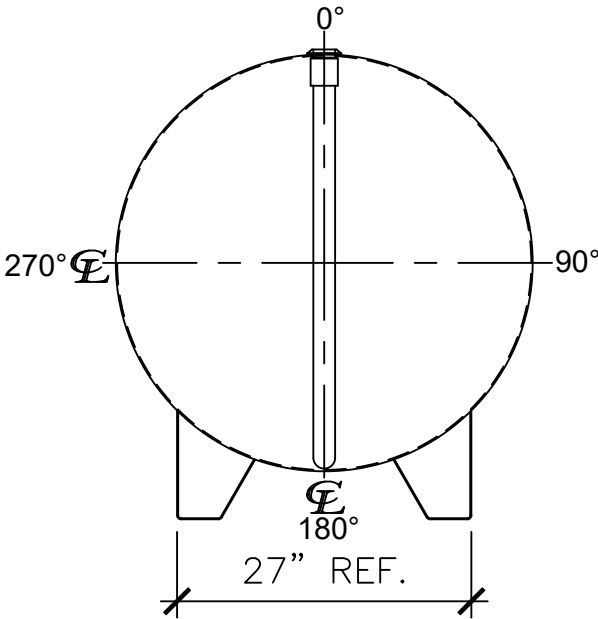
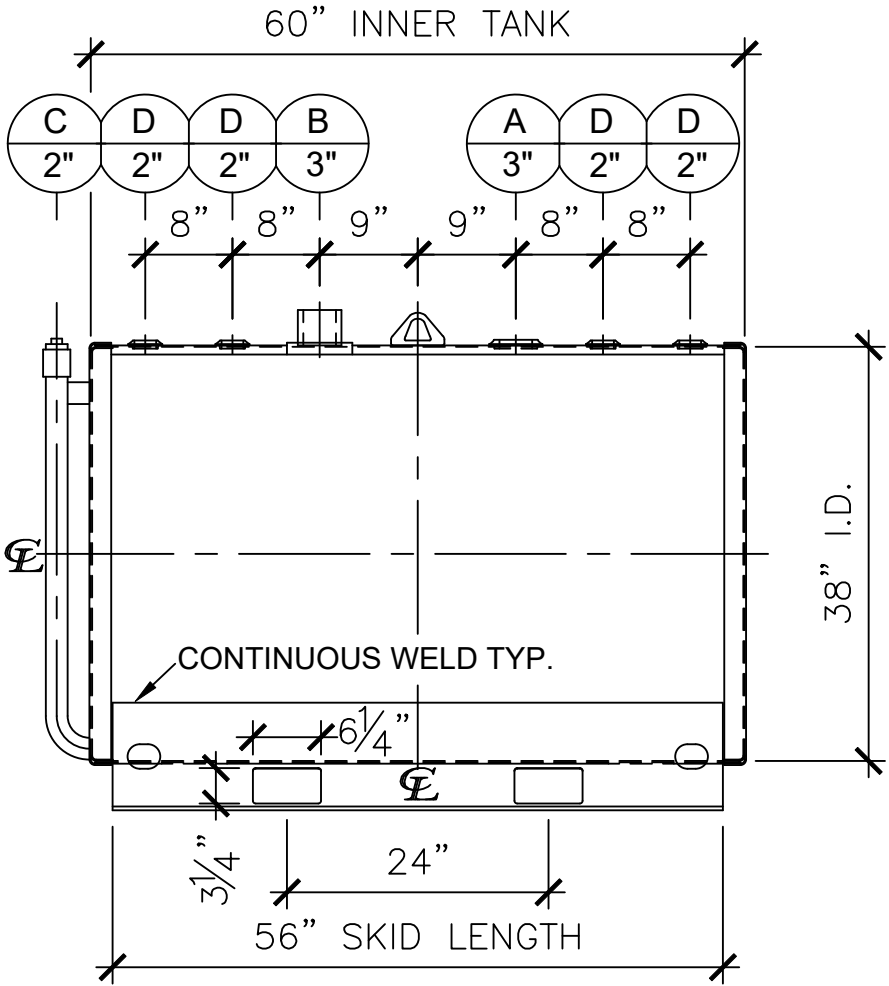


NOZZLE SCHEDULE						
ITEM	SIZE	RATING	TYPE	MATL	REMARKS	NOTES
A	3"	N.P.T.	W.F.	C.S.	PRIMARY	EMERGENCY VENT OPENING
B	3"	N.P.T.	H.CPL.	C.S.	SECONDARY	EMERGENCY VENT OPENING
C	2"	N.P.T.	CPL.	C.S.	-	INTERSTICE MONITOR
D	2"	N.P.T.	W.F.	C.S.	-	-



LEFT SIDE



FRONT VIEW

- NOTES:
- A. Material: H.R. Carbon Steel.
 - B. Design Pressure: Atmospheric.
 - C. Design Temperature: Ambient.
 - D. Built & labeled per U.L. spec. #142.
 - E. Exterior: Gray primer included; see Sales Order for top coat.
 - F. All fittings to be protected for shipment.
 - G. Customer to verify nozzle sizes, locations, and quantities.
 - H. Saddles/skids may require shimming or grouting during installation.

APPROVAL FOR CONSTRUCTION SCHEDULE A - MASTER TERMS & CONDITION OF SALE*		SALES ORDER:		WEIGHT (LBS): 1000	
<input type="checkbox"/> APPROVED AS DRAWN.					
<input type="checkbox"/> APPROVED WITH NOTED CHANGES. CONSTRUCTION WILL BE SCHEDULED WHEN SIGNED DRAWING AND CONFIRMED ORDER ARE RECEIVED.		All units inches unless stated otherwise			
SIGNATURE: _____		Phone: 870-735-4473			
DATE: _____		DESCRIPTION: 300 GALLON 38" I.D. x 5'-0" O.A.L. DOUBLE WALL SKID TANK			
*All pages of this Schedule A are incorporated by reference and are a part of the additional terms of the Master Terms & Conditions of Sale. www.newberrytanks.com/masterterms.pdf		CUSTOMER: _____		P.O.# _____	
		DATE: 06/07/23		DRAWN BY: WR	
		SCALE: _____		SHEET 1 OF 1	
		DWG.# NB00300DWS03812G			