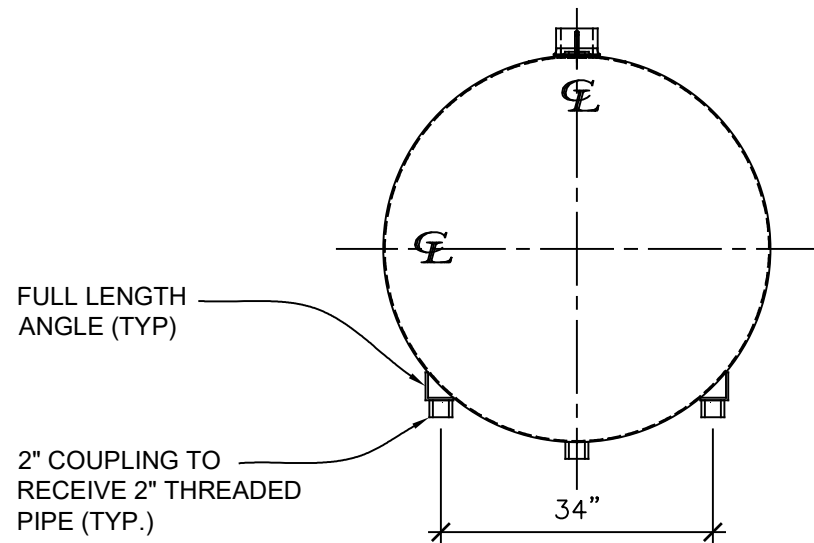


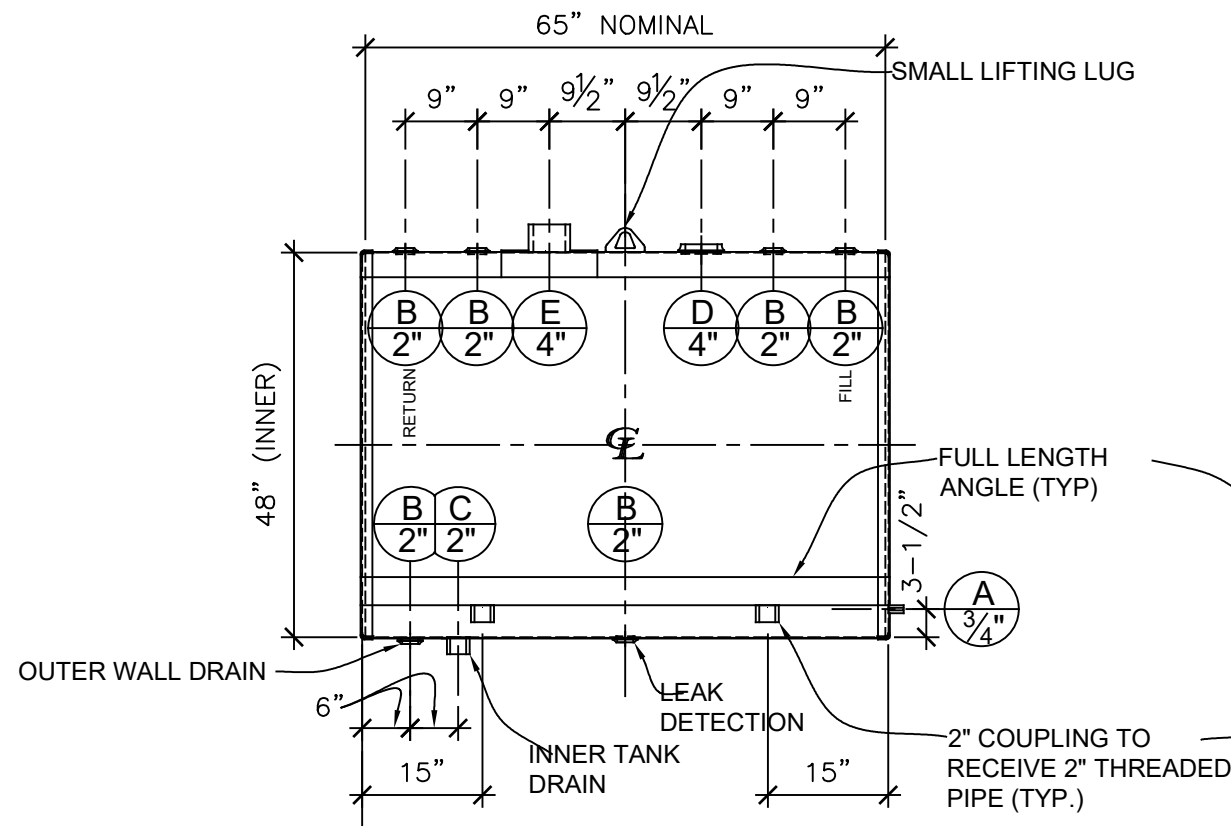
PLAN

NOZZLE SCHEDULE								
ITEM	SIZE	RATING	TYPE	MATL	PROJ IN	PROJ OUT	REMARKS	NOTES
A	3/4"	N.P.T.	Full CPL	C.S.	STD.	STD.		
B	2"	N.P.T.	W.F.	C.S.	STD.	STD.		
C	2"	N.P.T.	Full CPL	C.S.	STD.	STD.		
D	4"	N.P.T.	W.F.	C.S.	STD.	STD.	PRIMARY	EMERGENCY VENT
E	4"	N.P.T.	H. CPL	C.S.	STD.	STD.	SECONDARY	EMERGENCY VENT

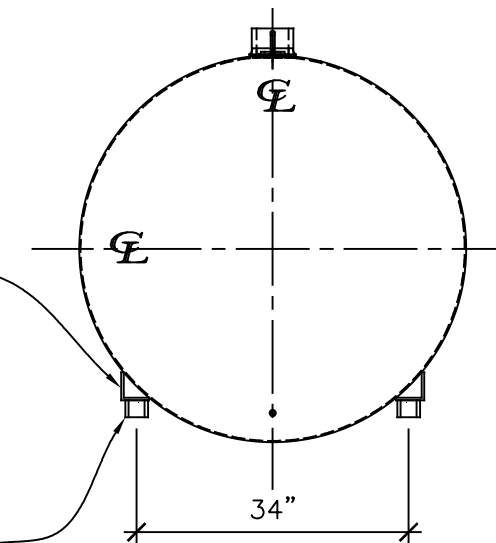
# 500 GAL. CRITIAL DIMENSIONS



LEFT SIDE



FRONT VIEW



RIGHT SIDE

## NOTES:

- A. Quantity: One
- B. Material: H.R. Carbon Steel.
- C. Design & Operating Pressure: Atmospheric.
- D. Design & Operating Temperature: Ambient.
- E. Tank to be built & labeled per U.L. spec. #142.
- F. Tank to be air tested with water & soap suds solution.
- G. Interior: Remove weld slag, ship clean & dry.
- H. Exterior: Brushblast & apply red oxide primer.
- I. All fittings to be protected for shipment.
- J. Customer has the responsibility to verify all dimensions.

\*All pages of this Schedule A are incorporated by reference and are a part of the additional terms of the Master Terms & Conditions of Sale.  
[www.newberrytanks.com/masterterms.pdf](http://www.newberrytanks.com/masterterms.pdf)

## APPROVAL FOR CONSTRUCTION SCHEDULE A - MASTER TERMS & CONDITIONS OF SALE\*

- ☐ APPROVED AS DRAWN.
  - ☐ APPROVED WITH NOTED CHANGES, CONSTRUCTION WILL BE SCHEDULED WHEN SIGNED DRAWING IS RECEIVED.
- SIGNATURE \_\_\_\_\_  
DATE: \_\_\_\_\_

## SALES ORDER:



VESSEL DESCRIPTION:  
**500 GALLON, 48" DIA. x 65" LONG x 12 GA.,  
ABOVE GROUND, DUAL WALL TANK**

CUSTOMER:			P.O.#
DATE: 3/18/2020	SCALE:	DWG.# NB00500DSP04812G	DRAWN BY: TC CHKD. BY: BD

This drawing may contain CONFIDENTIAL information and is intended only for the use of the specific individual(s) to which it is addressed.