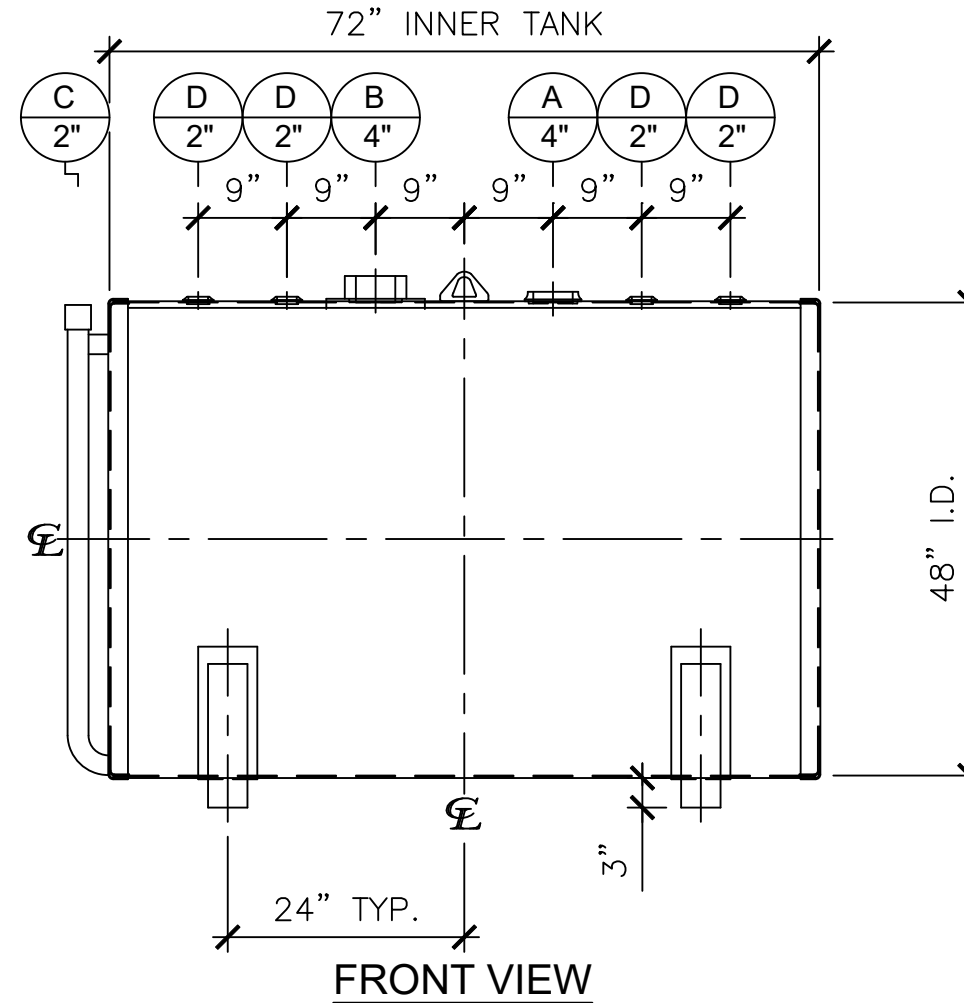
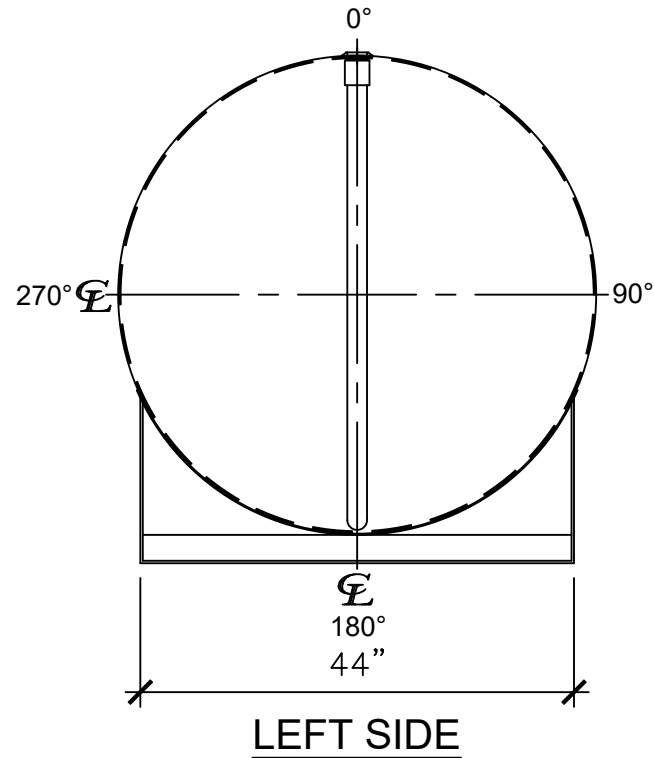


**NOZZLE SCHEDULE**

ITEM	SIZE	RATING	TYPE	MATL	REMARKS	NOTES
A	4"	N.P.T.	W.F.	C.S.	PRIMARY	EMERGENCY VENT OPENING
B	4"	N.P.T.	H.CPL.	C.S.	SECONDARY	EMERGENCY VENT OPENING
C	2"	N.P.T.	PIPE	C.S.	-	MONITORING PORT
D	2"	N.P.T.	W.F.	C.S.	-	-



**NOTES:**

- A. Material: H.R. Carbon Steel.
- B. Design Pressure: Atmospheric.
- C. Design Temperature: Ambient.
- D. Built & Labeled per U.L. Spec. #142.
- E. Exterior: Gray primer included; see Sales Order for top coat.
- F. All Fittings to be protected for shipment.
- G. Customer to verify nozzle sizes, locations, and quantities.
- H. Saddles/skids may require shimming or grouting during installation.

APPROVAL FOR CONSTRUCTION SCHEDULE A - MASTER TERMS & CONDITION OF SALE*		<b>SALES ORDER:</b>		WEIGHT (LBS): 1200
<input type="checkbox"/> APPROVED AS DRAWN.				All units inches unless stated otherwise Phone: 870-735-4473
<input type="checkbox"/> APPROVED WITH NOTED CHANGES, CONSTRUCTION WILL BE SCHEDULED WHEN SIGNED DRAWING AND CONFIRMED ORDER ARE RECEIVED.				
SIGNATURE: _____		DESCRIPTION: <b>550 GALLON 48" I.D. x 6'-0" O.A.L. DOUBLE WALL BRACKET TANK</b>		
DATE: _____		CUSTOMER: _____		P.O.# _____
DATE: 06/23/23	SCALE:	DWG.# NB00550DWB04812G	DRAWN BY: WR SHEET 1 OF 1	
<small>*All pages of this Schedule A are incorporated by reference and are a part of the additional terms of the Master Terms &amp; Conditions of Sale. www.newberrytanks.com/masterterms.pdf</small>				