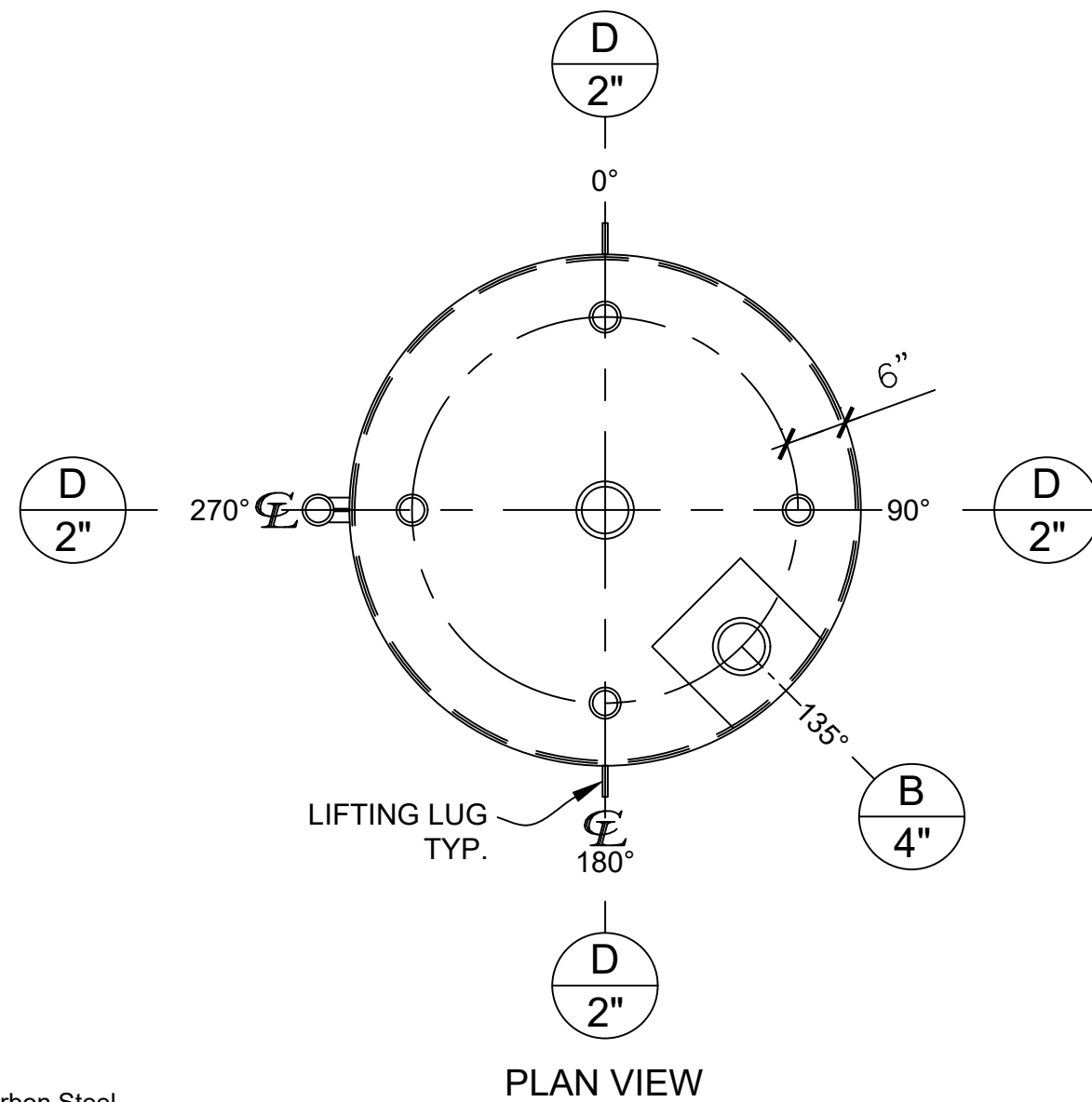


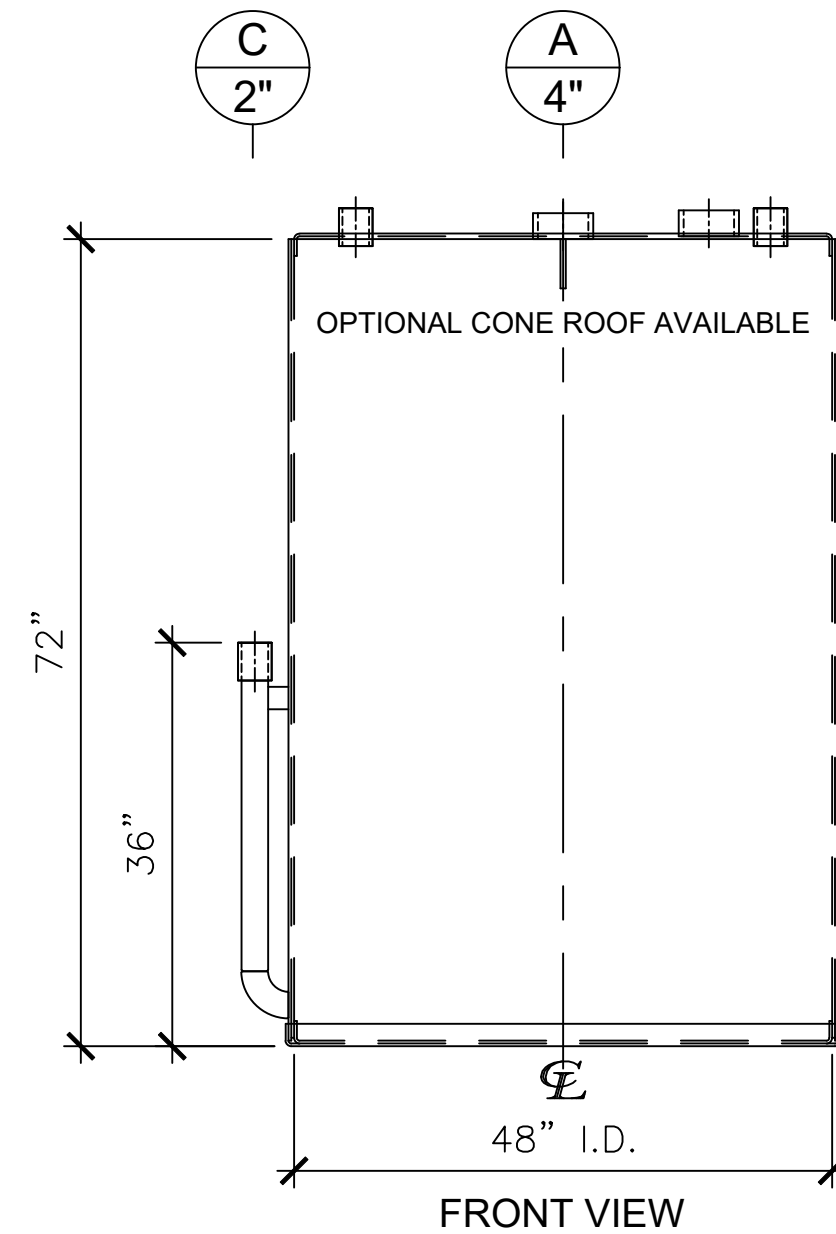
NOZZLE SCHEDULE

ITEM	SIZE	RATING	TYPE	MATL	PROJ. IN	PROJ. OUT	REMARKS	NOTES
A	4"	NPT	H.CPL.	C.S.	STD.	STD.	PRIMARY	EMERGENCY VENT OPENING
B	4"	NPT	H.CPL.	C.S.	STD.	STD.	SECONDARY	EMERGENCY VENT OPENING
C	2"	NPT	PIPE	C.S.	STD.	STD.	-	MONITORING PORT
D	2"	NPT	CPL.	C.S.	STD.	STD.	-	-



NOTES:

- A. Material: H.R. Carbon Steel.
- B. Design Pressure: Atmospheric.
- C. Design Temperature: Ambient.
- D. Built & Labeled per UL 142.
- E. Exterior: One coat gray primer. See Sales Order for top coat.
- F. All Fittings to be protected for shipment.
- G. Customer to verify Nozzle sizes, locations, and quantities.



APPROVAL FOR CONSTRUCTION
SCHEDULE A - MASTER TERMS &
CONDITION OF SALE*

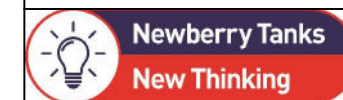
- APPROVED AS DRAWN.
- APPROVED WITH NOTED CHANGES.
CONSTRUCTION WILL BE SCHEDULED
WHEN SIGNED DRAWING AND
CONFIRMED ORDER ARE RECEIVED.

SIGNATURE: _____

DATE: _____

*All pages of this Schedule A are incorporated by
reference and are a part of the additional terms of
the Master Terms & Conditions of Sale.
www.newberrytanks.com/masterterms.pdf

SALES ORDER:



Phone: 870-735-4473

WEIGHT (LBS): 1,275

All units inches
unless stated
otherwise

DESCRIPTION:

**550 GALLON 48" I.D. x 6'-0" SHELL HEIGHT
DOUBLE WALL VERTICAL TANK**

CUSTOMER:

DATE: 06/11/26

SCALE:

DWG.#

NB00550DWV048

P.O.#

DRAWN BY: WR
SHEET 1 OF 1