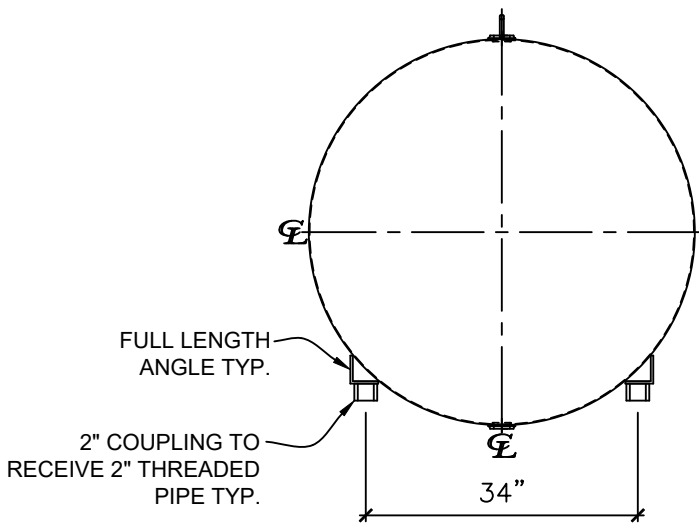
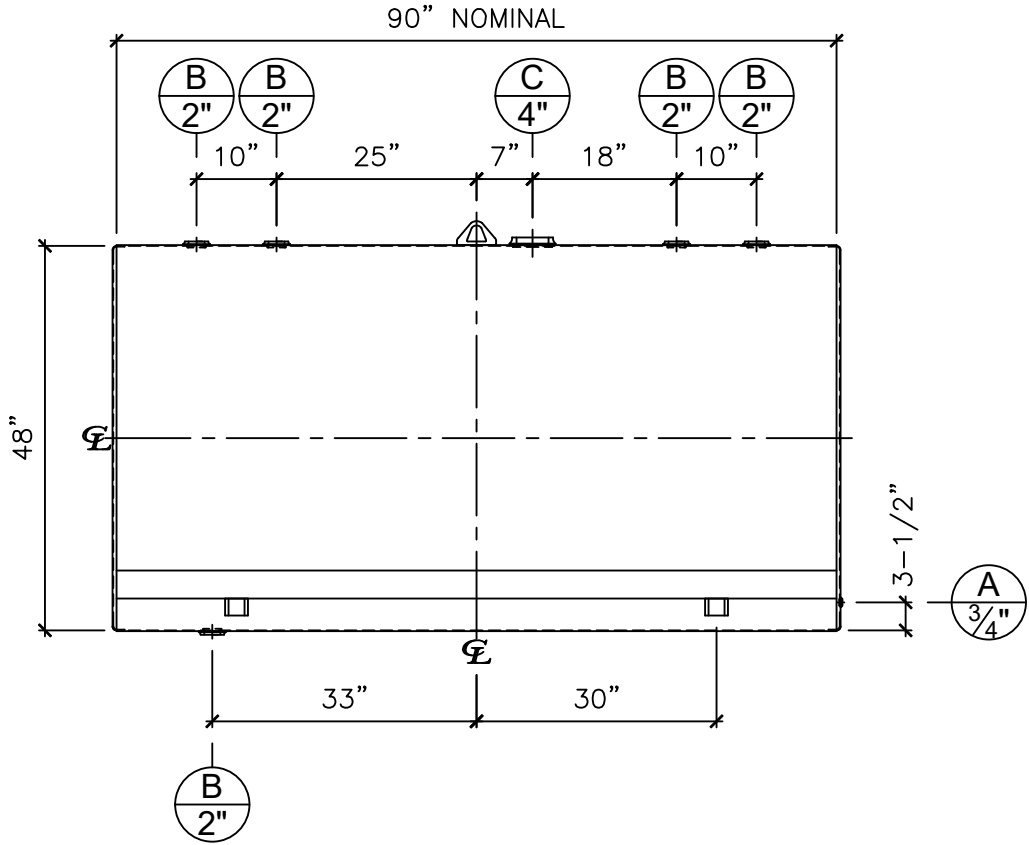


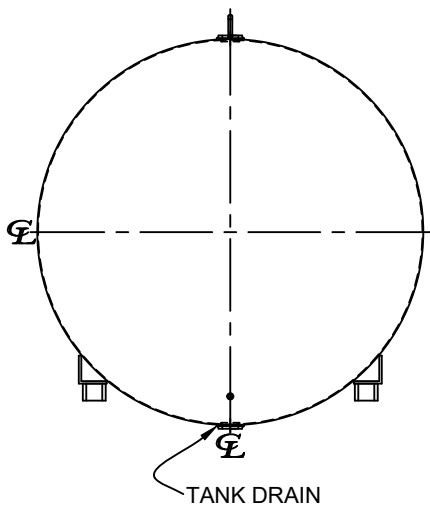
NOZZLE SCHEDULE								
ITEM	SIZE	RATING	TYPE	MATL	PROJ IN	PROJ OUT	REMARKS	NOTES
A	3/4"	N.P.T.	W.F.	C.S.	STD.	STD.	-	-
B	2"	N.P.T.	W.F.	C.S.	STD.	STD.	-	-
C	4"	N.P.T.	W.F.	C.S.	STD.	STD.	PRIMARY	EMERGENCY VENT



LEFT SIDE




FRONT VIEW



RIGHT SIDE

NOTES:

- A. Material: H.R. Carbon Steel.
- B. Design Pressure: Atmospheric.
- C. Design Temperature: Ambient.
- D. Built & labeled per U.L. spec. #142.
- E. Air test with water & soap suds solution.
- F. Interior: Remove weld slag, ship clean & dry.
- G. Exterior: Brushblast & apply red oxide primer.
- H. All fittings to be protected for shipment.
- I. Customer to verify nozzle sizes, locations, and quantities.

APPROVAL FOR CONSTRUCTION SCHEDULE A - MASTER TERMS & CONDITION OF SALE*			SALES ORDER:		WEIGHT (LBS): 922	
<input type="checkbox"/> APPROVED AS DRAWN. <input type="checkbox"/> APPROVED WITH NOTED CHANGES. CONSTRUCTION WILL BE SCHEDULED WHEN SIGNED DRAWING AND CONFIRMED ORDER ARE RECEIVED. SIGNATURE: _____ DATE: _____ <small>*All pages of this Schedule A are incorporated by reference and are a part of the additional terms of the Master Terms & Conditions of Sale. www.newberrytanks.com/masterterms.pdf</small>			 Phone: 870-735-4473		All units inches unless stated otherwise	
DESCRIPTION: 700 GALLON 48" DIA. x 90" LONG x 10 GA. ABOVE GROUND SINGLE WALL TANK			CUSTOMER: -		P.O.# -	
DATE: 05/04/23		SCALE:	DWG.# NB00700SSP04810G	DRAWN BY: WR SHEET 1 OF 1		