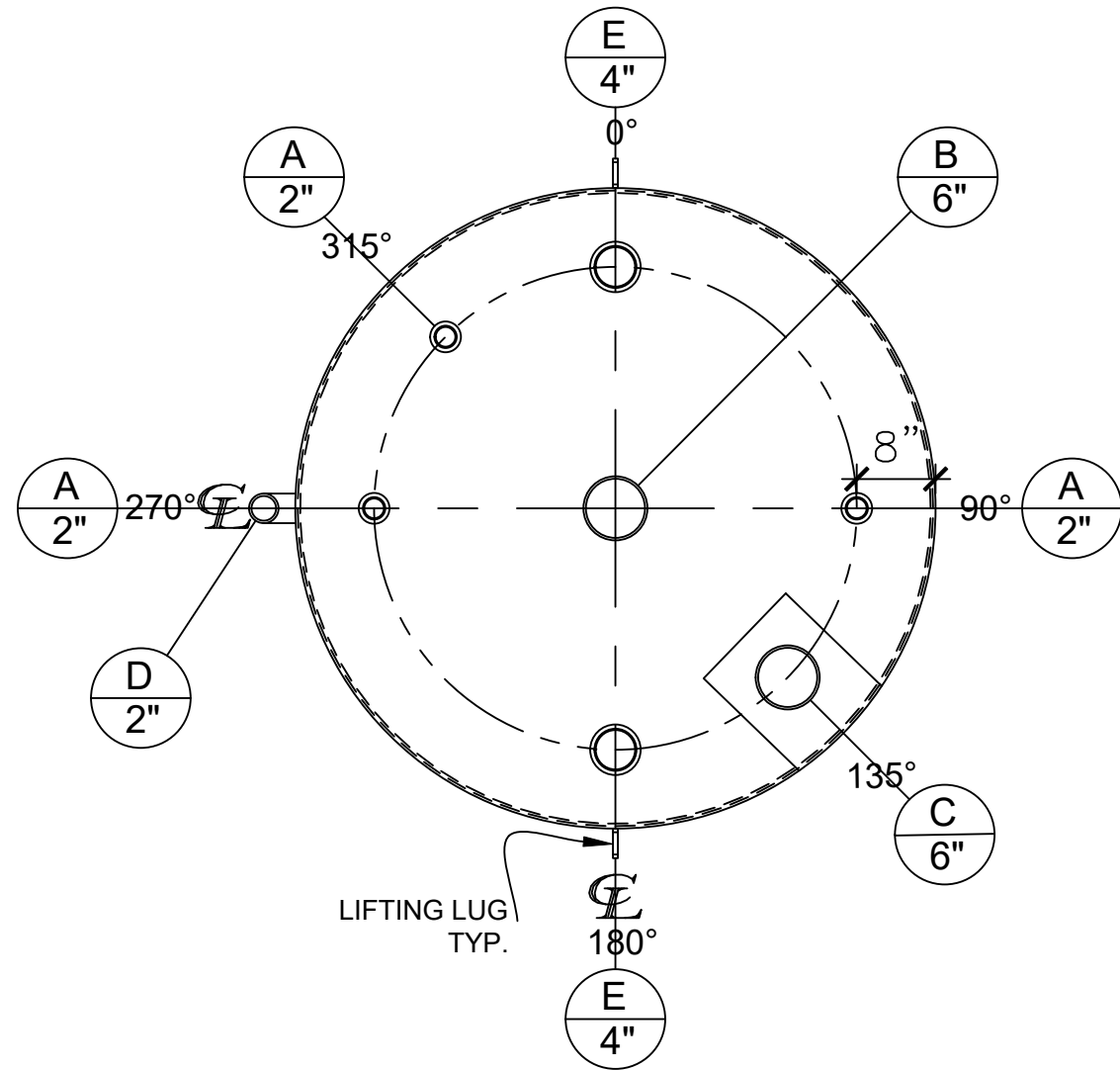



FRONT VIEW



PLAN VIEW

- NOTES:**
- A. Material: H.R. Carbon Steel.
 - B. Design Pressure: Atmospheric.
 - C. Design Temperature: Ambient.
 - D. Built & labeled per U.L. spec. #142.
 - E. Exterior: One coat gray primer. See sales order for top coat.
 - F. All fittings to be protected for shipment.
 - G. Customer to verify nozzle sizes, locations and quantities.

NOZZLE SCHEDULE								
ITEM	SIZE	RATING	TYPE	MATL	PROJ. IN	PROJ. OUT	REMARKS	NOTES
A	2"	N.P.T.	CPL.	C.S.	STD.	STD.	-	-
B	6"	N.P.T.	H.CPL.	C.S.	STD.	STD.	PRIMARY	EMERGENCY VENT OPENING
C	6"	N.P.T.	H.CPL.	C.S.	STD.	STD.	SECONDARY	EMERGENCY VENT OPENING
D	2"	N.P.T.	PIPE	C.S.	STD.	STD.	-	MONITORING PORT
E	4"	N.P.T.	CPL.	C.S.	STD.	STD.	-	-

APPROVAL FOR CONSTRUCTION SCHEDULE A - MASTER TERMS & CONDITION OF SALE*			SALES ORDER:-		WEIGHT (LBS): 2100	
<input type="checkbox"/> APPROVED AS DRAWN.						
<input type="checkbox"/> APPROVED WITH NOTED CHANGES. CONSTRUCTION WILL BE SCHEDULED WHEN SIGNED DRAWING AND CONFIRMED ORDER ARE RECEIVED.			All units inches unless stated otherwise			
SIGNATURE: _____			Phone: 870-735-4473			
DATE: _____			DESCRIPTION: 1000 Gallon 64" I.D. x 6'-0" Shell Height Double Wall Vertical Tank			
*All pages of this Schedule A are incorporated by reference and are a part of the additional terms of the Master Terms & Conditions of Sale. www.newberrytanks.com/masterterms.pdf			CUSTOMER: _____		P.O.# _____	
DATE: 4/6/2023		SCALE: _____	DWG.# NB01000DWV06410G		DRAWN BY: AJC SHEET 1 OF 1	