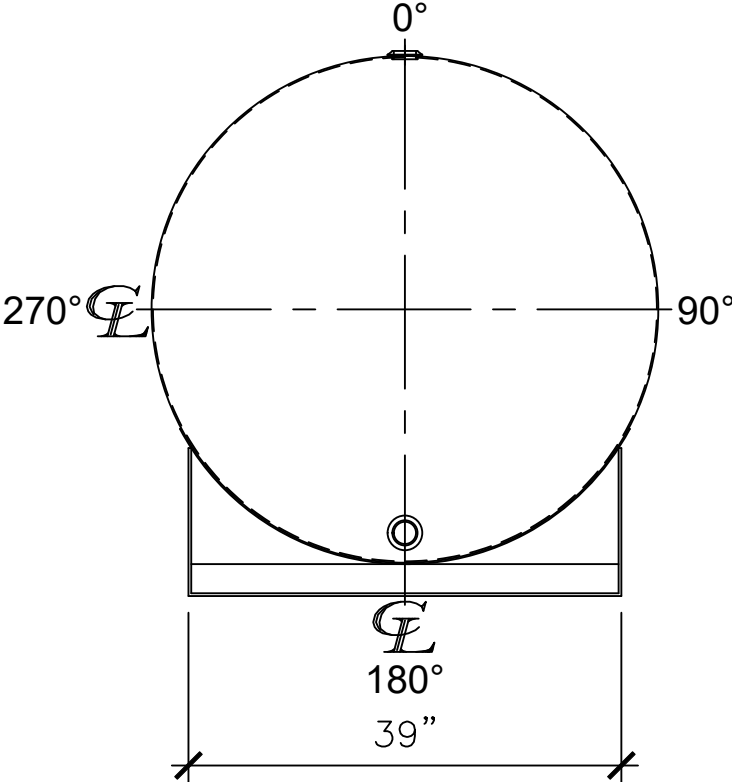
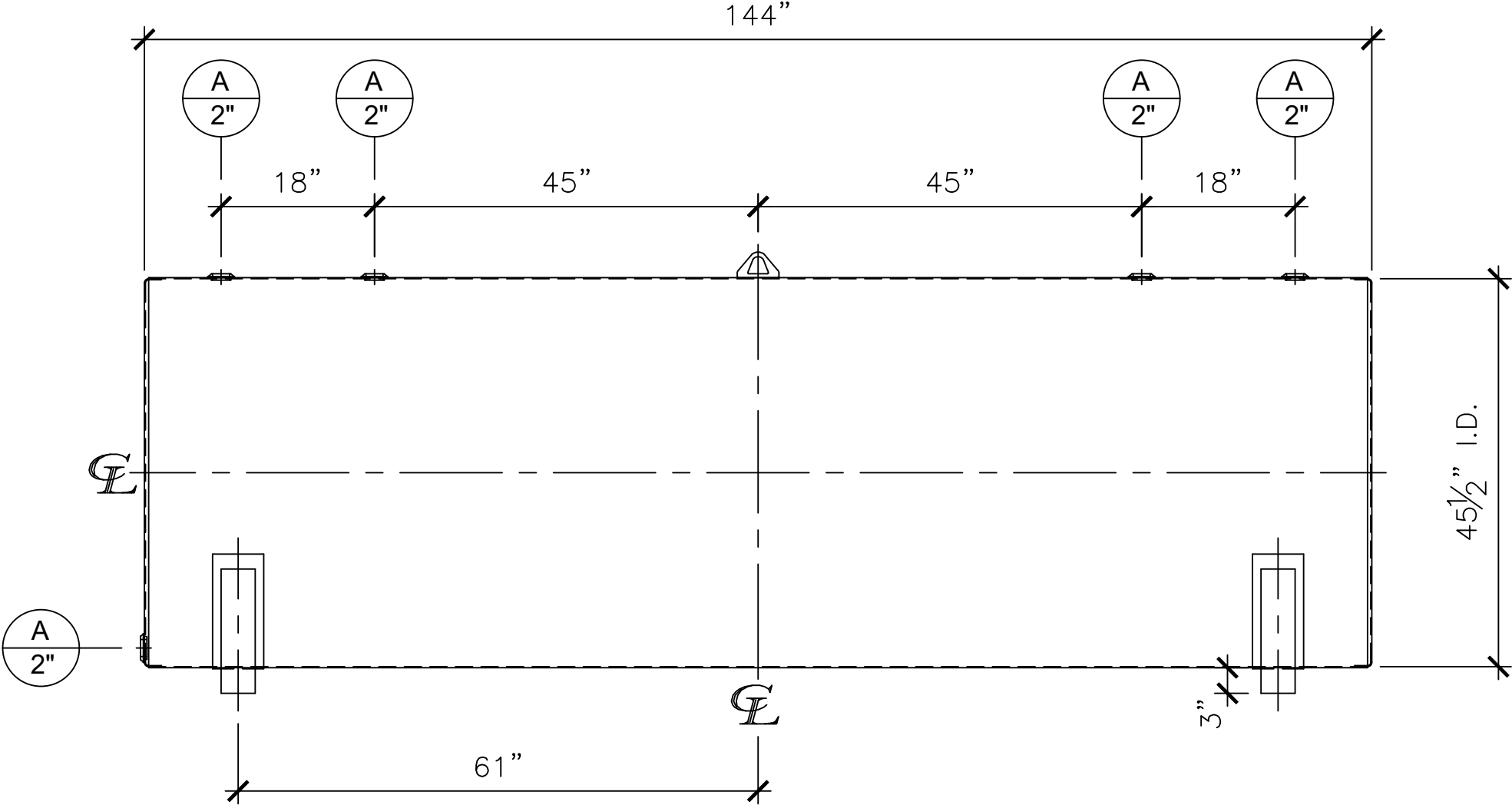


NOZZLE SCHEDULE						
ITEM	SIZE	RATING	TYPE	MATL	REMARKS	NOTES
A	2"	N.P.T.	W.F.	C.S.	-	-




LEFT SIDE



FRONT VIEW

NOTES:

- A. Material: H.R. Carbon Steel.
- B. Design Pressure: Atmospheric.
- C. Design Temperature: Ambient.
- D. Exterior: Gray primer included; see Sales Order for top coat.
- E. All Fittings to be protected for shipment.
- F. Customer to verify nozzle sizes, locations, and quantities.
- G. Saddles/skids may require shimming or grouting during installation.

<div>APPROVAL FOR CONSTRUCTION SCHEDULE A - MASTER TERMS &amp; CONDITION OF SALE*</div> <div><input type="checkbox"/> APPROVED AS DRAWN.</div> <div><input type="checkbox"/> APPROVED WITH NOTED CHANGES. CONSTRUCTION WILL BE SCHEDULED WHEN SIGNED DRAWING AND CONFIRMED ORDER ARE RECEIVED.</div> <div>SIGNATURE: _____</div> <div>DATE: _____</div> <div>*All pages of this Schedule A are incorporated by reference and are a part of the additional terms of the Master Terms &amp; Conditions of Sale. www.newberrytanks.com/masterterms.pdf</div>	SALES ORDER: -		WEIGHT (LBS): 1050	
	<div><div></div><div>Newberry Tanks New Thinking</div></div>		All units inches unless stated otherwise	
	Phone: 870-735-4473			
	DESCRIPTION: 1000 Gallon 45 1/2" I.D. x 12'-0" O.A.L. Single Wall Farm Bracket Tank			
CUSTOMER: _____			P.O.# _____	
DATE: 04/17/23			SCALE: _____	DWG.# NB01000FTB45512G
			DRAWN BY: WR	
			SHEET 1 OF 1	