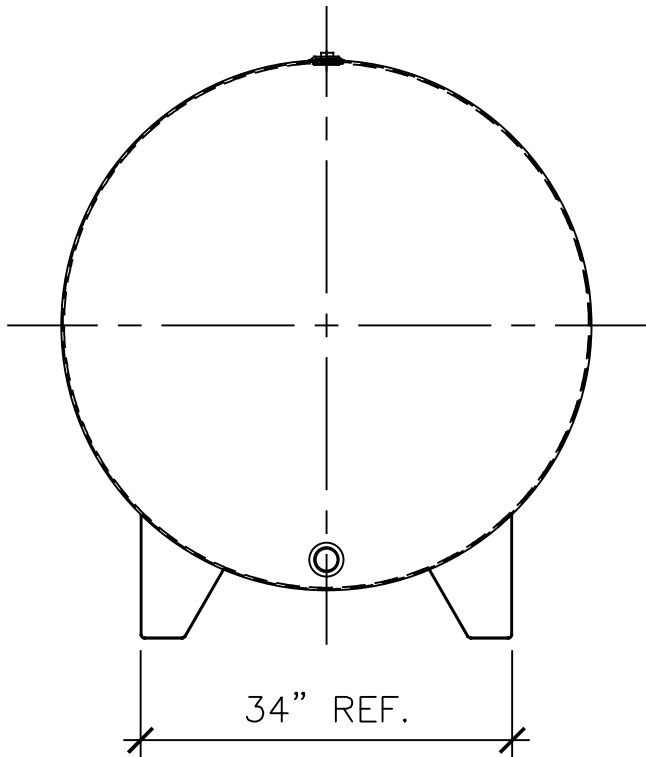
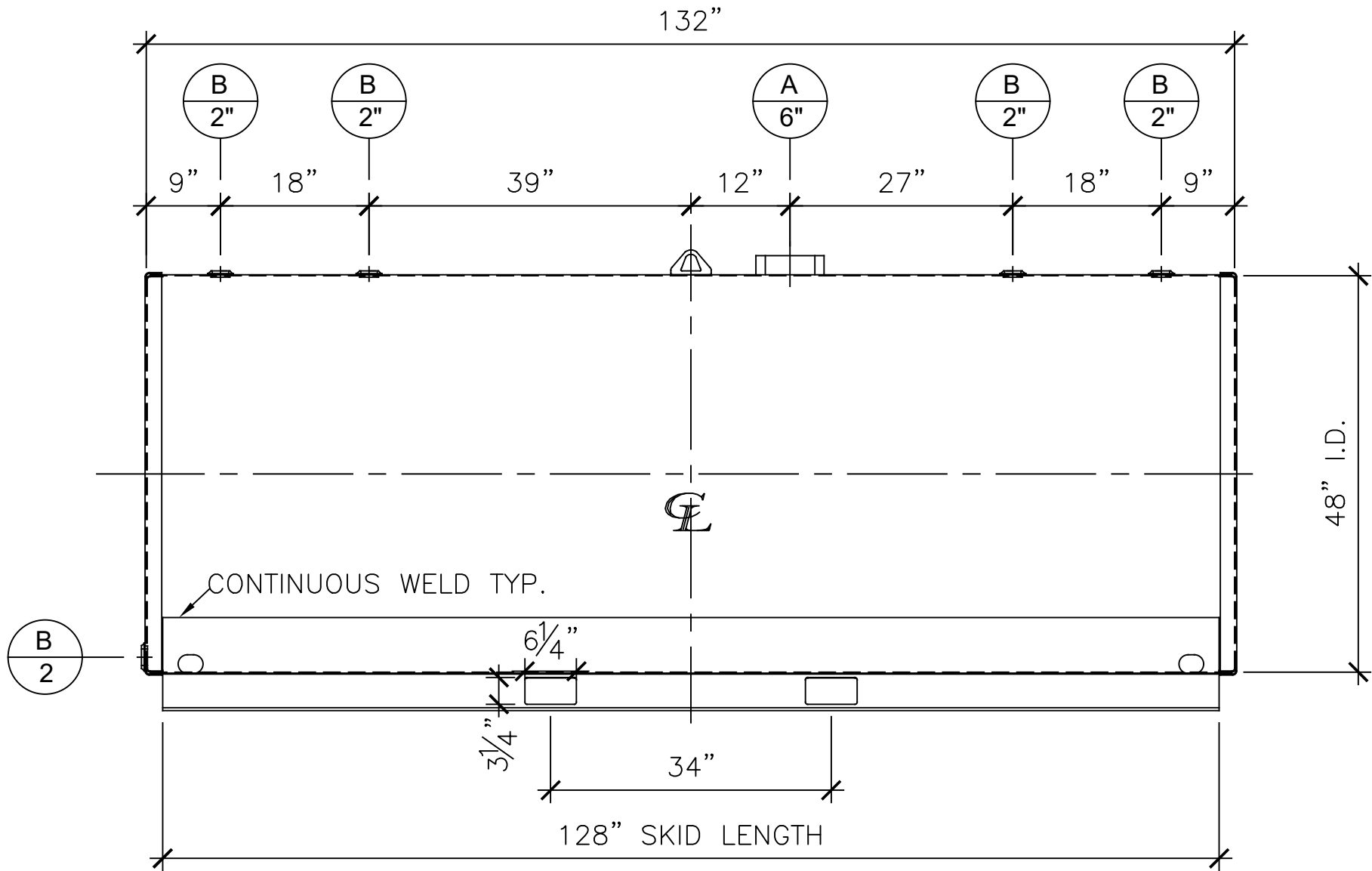


| NOZZLE SCHEDULE | | | | | | |
|-----------------|------|--------|--------|------|---------|------------------------|
| ITEM | SIZE | RATING | TYPE | MATL | REMARKS | NOTES |
| A | 6" | N.P.T. | H.CPL. | C.S. | | EMERGENCY VENT OPENING |
| B | 2" | N.P.T. | W.F. | C.S. | | |



LEFT SIDE




FRONT VIEW

NOTES:

- A. Material: H.R. Carbon Steel.
- B. Design Pressure: Atmospheric.
- C. Design Temperature: Ambient.
- D. Built & Labeled per U.L. Spec. #142.
- E. Exterior: Gray primer included; see Sales Order for top coat.
- F. All Fittings to be protected for shipment.
- G. Customer to verify nozzle sizes, locations and quantities.
- H. Saddles/skids may require shimming or grouting during installation.

*All pages of this Schedule A are incorporated by reference and are a part of the additional terms of the Master Terms & Conditions of Sale.
www.newberrytanks.com/masterterms.pdf

| | | | | | |
|--------------------------------------------------------------------------------------------------------------------------------------------------------------------------------------------------------------------------------------------------------|--|------------------------------------------------------------------------------------------------------------------------------|--------|------------------------------------------------|------------------------------|
| APPROVAL FOR CONSTRUCTION SCHEDULE A - MASTER TERMS & CONDITION OF SALE* | | SALES ORDER: - | | WEIGHT (LBS): | |
| <input type="checkbox"/> APPROVED AS DRAWN. | |  New Thinking Phone: 870-735-4473 | | All units inches unless stated otherwise | |
| <input type="checkbox"/> APPROVED WITH NOTED CHANGES. CONSTRUCTION WILL BE SCHEDULED WHEN SIGNED DRAWING AND CONFIRMED ORDER ARE RECEIVED. | | | | | |
| SIGNATURE: _____ | | DESCRIPTION: 1000 Gallon 48" I.D. x 11'-0" O.A.L. Single Wall Skid Tank | | | |
| DATE: _____ | | CUSTOMER: _____ | | P.O.# _____ | |
| *All pages of this Schedule A are incorporated by reference and are a part of the additional terms of the Master Terms & Conditions of Sale. www.newberrytanks.com/masterterms.pdf | | DATE: 10/1/2022 | SCALE: | DWG.# NB01000SWS04810G | DRAWN BY: AG SHEET 1 OF 1 |