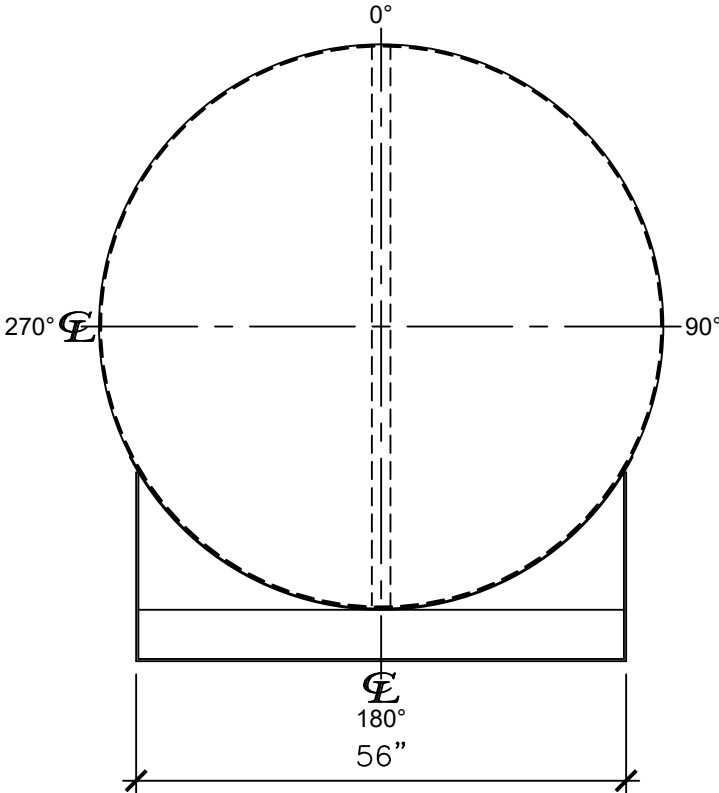
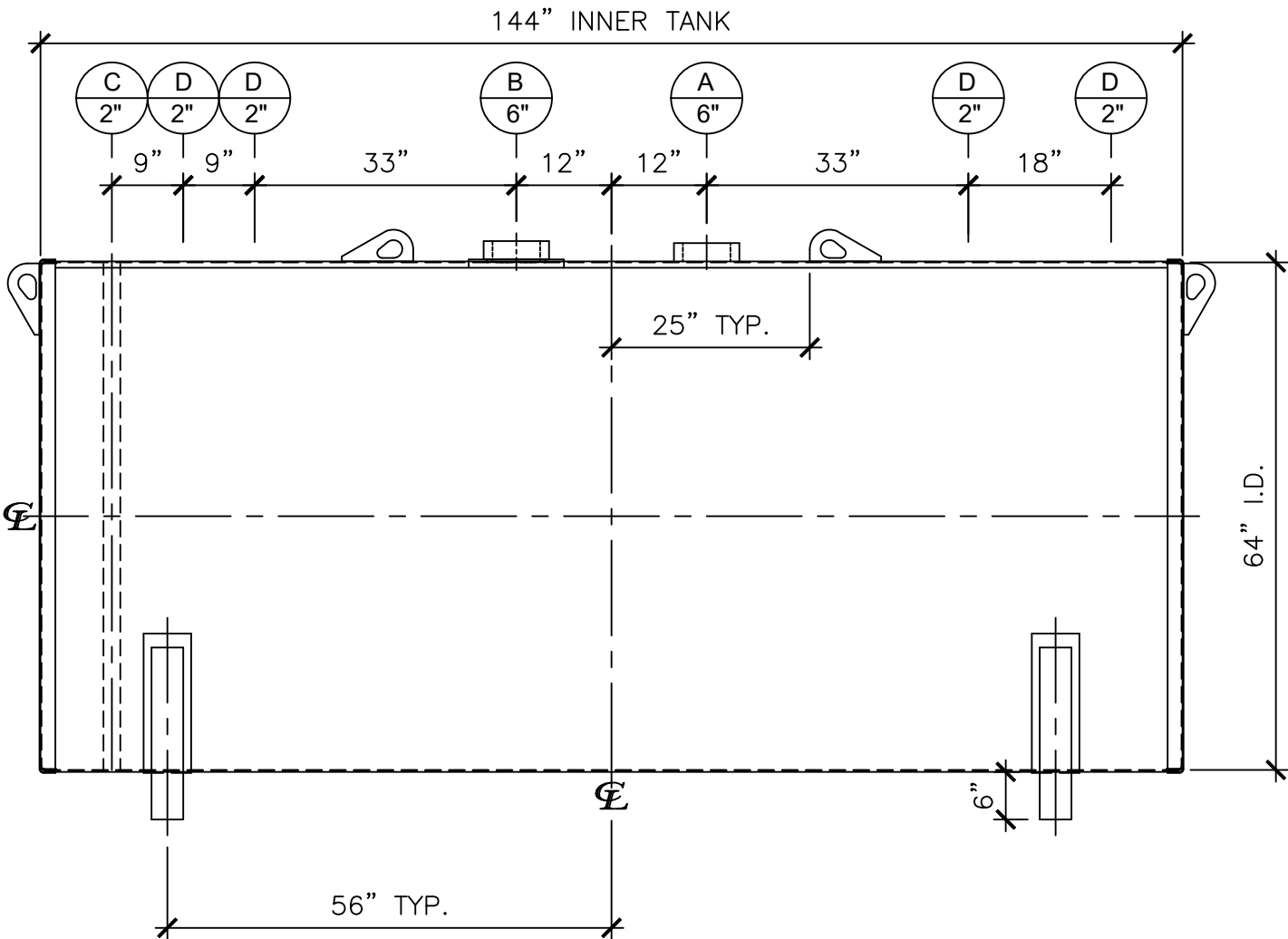


NOZZLE SCHEDULE								
ITEM	SIZE	RATING	TYPE	MATL	PROJ. IN	PROJ. OUT	REMARKS	NOTES
A	6"	N.P.T.	H.CPL.	C.S.	STD.	STD.	PRIMARY	EMERGENCY VENT OPENING
B	6"	N.P.T.	H.CPL.	C.S.	STD.	STD.	SECONDARY	EMERGENCY VENT OPENING
C	2"	N.P.T.	M.F.	C.S.	STD.	STD.	-	MONITORING PORT
D	2"	N.P.T.	W.F.	C.S.	STD.	STD.	-	-




LEFT SIDE



FRONT VIEW

- NOTES:**
- A. Material: H.R. Carbon Steel.
 - B. Design Pressure: Atmospheric.
 - C. Design Temperature: Ambient.
 - D. Built & Labeled per U.L. #142 & SwRI 97-04 specifications.
 - E. Exterior: Blast & Apply one shop coat WHITE enamel.
 - F. All Fittings to be protected for shipment.
 - G. Customer to verify Nozzle sizes, locations, and quantities.
 - H. Saddles/Skids may require shimming or grouting during installation.

APPROVAL FOR CONSTRUCTION SCHEDULE A - MASTER TERMS & CONDITION OF SALE*		SALES ORDER:		WEIGHT (LBS): 3750	
<input type="checkbox"/> APPROVED AS DRAWN.		<div>Newberry Tanks New Thinking</div>			
<input type="checkbox"/> APPROVED WITH NOTED CHANGES. CONSTRUCTION WILL BE SCHEDULED WHEN SIGNED DRAWING AND CONFIRMED ORDER ARE RECEIVED.		All units inches unless stated otherwise			
SIGNATURE: _____		Phone: 870-735-4473			
DATE: _____		DESCRIPTION: 2000 GALLON 64" I.D. x 12'-0" O.A.L. FLAMESHIELD BRACKET TANK			
*All pages of this Schedule A are incorporated by reference and are a part of the additional terms of the Master Terms & Conditions of Sale. www.newberrytanks.com/masterterms.pdf		CUSTOMER: _____		P.O.# _____	
		DATE: 10/26/23		SCALE: _____	
		DWG.# NB02000FSD06407G		DRAWN BY: WR	
				SHEET 1 OF 1	