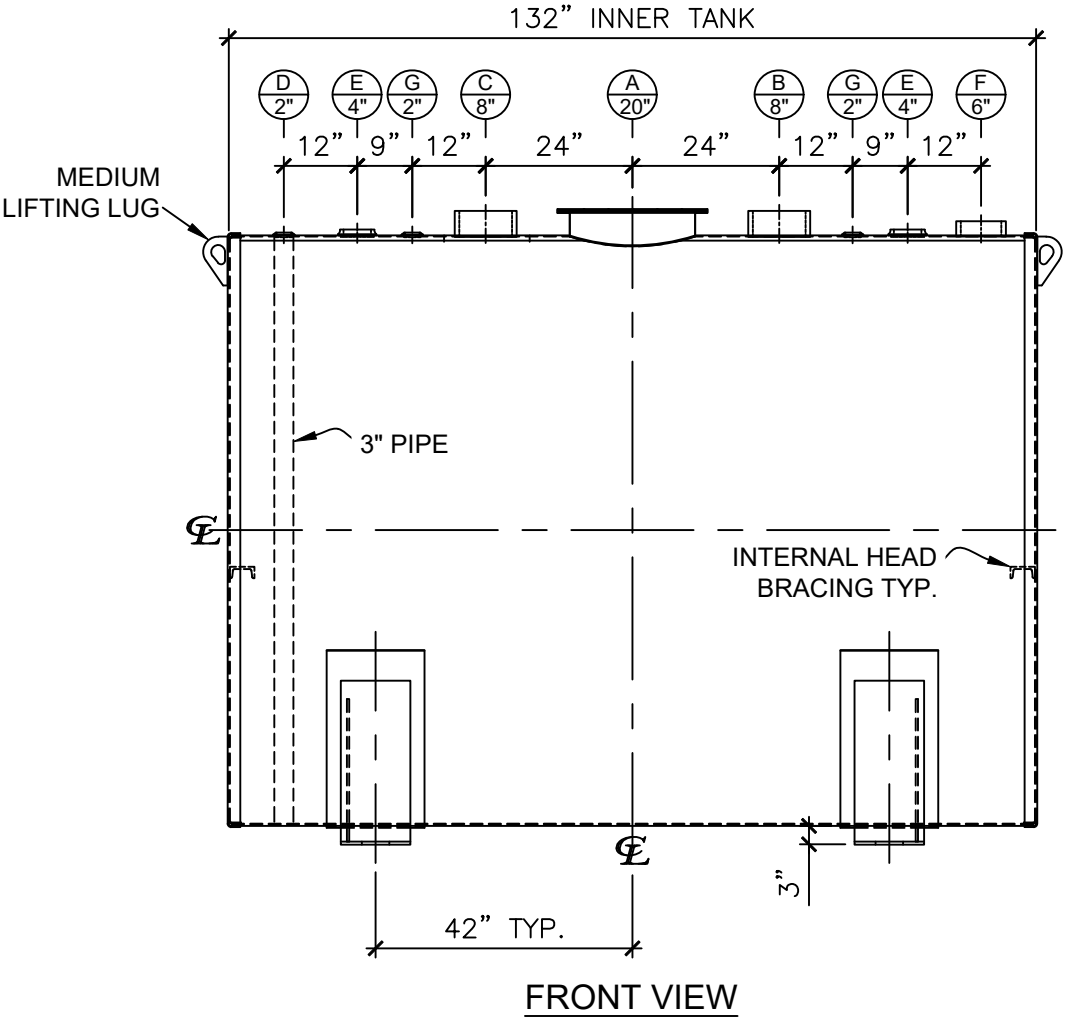
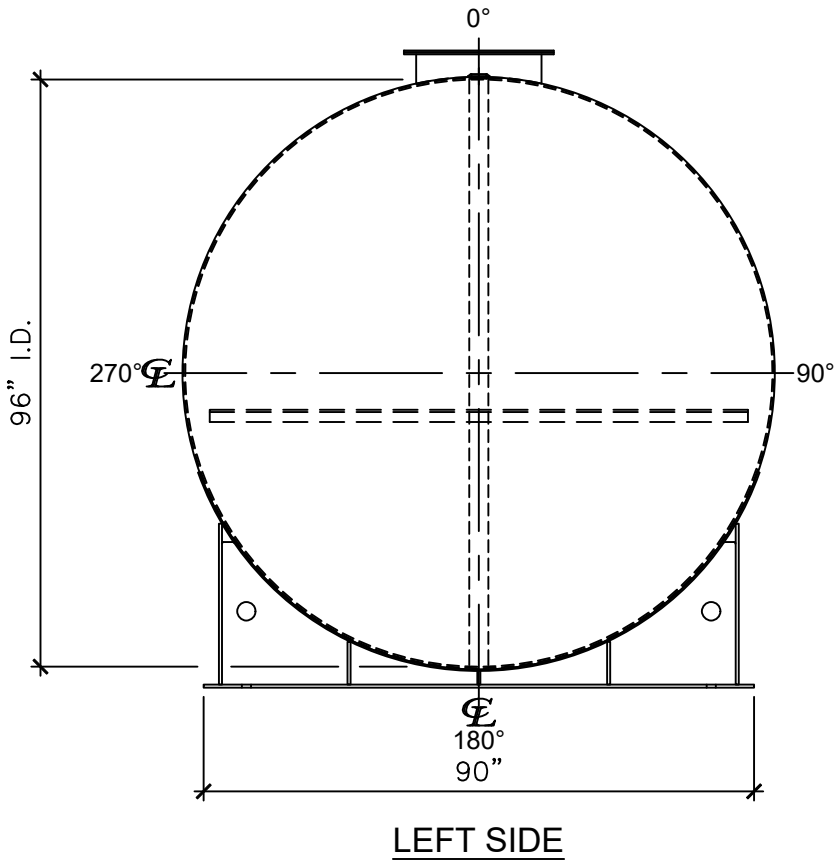


NOZZLE SCHEDULE						
ITEM	SIZE	RATING	TYPE	MATL	REMARKS	NOTES
A	20"	UL	MW	C.S.	SINGLE PUNCHED	TIGHT BOLTED
B	8"	NPT	H.CPL.	C.S.	PRIMARY	EMERGENCY VENT OPENING
C	8"	NPT	H.CPL.	C.S.	SECONDARY	EMERGENCY VENT OPENING
D	2"	NPT	M.F.	C.S.	-	MONITORING PORT
E	4"	NPT	W.F.	C.S.	-	-
F	6"	NPT	H.CPL.	C.S.	-	-
G	2"	NPT	W.F.	C.S.	-	-



- NOTES:
- A. Material: H.R. Carbon Steel.
 - B. Design Pressure: Atmospheric.
 - C. Design Temperature: Ambient.
 - D. Built & Labeled per UL 142.
 - E. Exterior: Gray primer included; see Sales Order for top coat.
 - F. All Fittings to be protected for shipment.
 - G. Customer to verify Nozzle sizes, locations, and quantities.
 - H. Saddles/Skids may require shimming or grouting during installation.

APPROVAL FOR CONSTRUCTION
SCHEDULE A - MASTER TERMS &
CONDITION OF SALE*

☐ APPROVED AS DRAWN.


☐ APPROVED WITH NOTED CHANGES.
CONSTRUCTION WILL BE SCHEDULED
WHEN SIGNED DRAWING AND
CONFIRMED ORDER ARE RECEIVED.

SIGNATURE: _____

DATE: _____

*All pages of this Schedule A are incorporated by
reference and are a part of the additional terms of
the Master Terms & Conditions of Sale.
www.newberrytanks.com/masterterms.pdf

SALES ORDER:



Newberry Tanks
New Thinking

Phone: 870-735-4473

DESCRIPTION:

4,000 GALLON 96" I.D. x 11'-0" O.A.L.
DOUBLE WALL SADDLE TANK

CUSTOMER:

-

DATE:

08/01/25

SCALE:

DWG.#

NB04000DWB096

WEIGHT (LBS): 7,500

All units inches
unless stated
otherwise

P.O.#:

-

DRAWN BY: WR

SHEET 1 OF 1