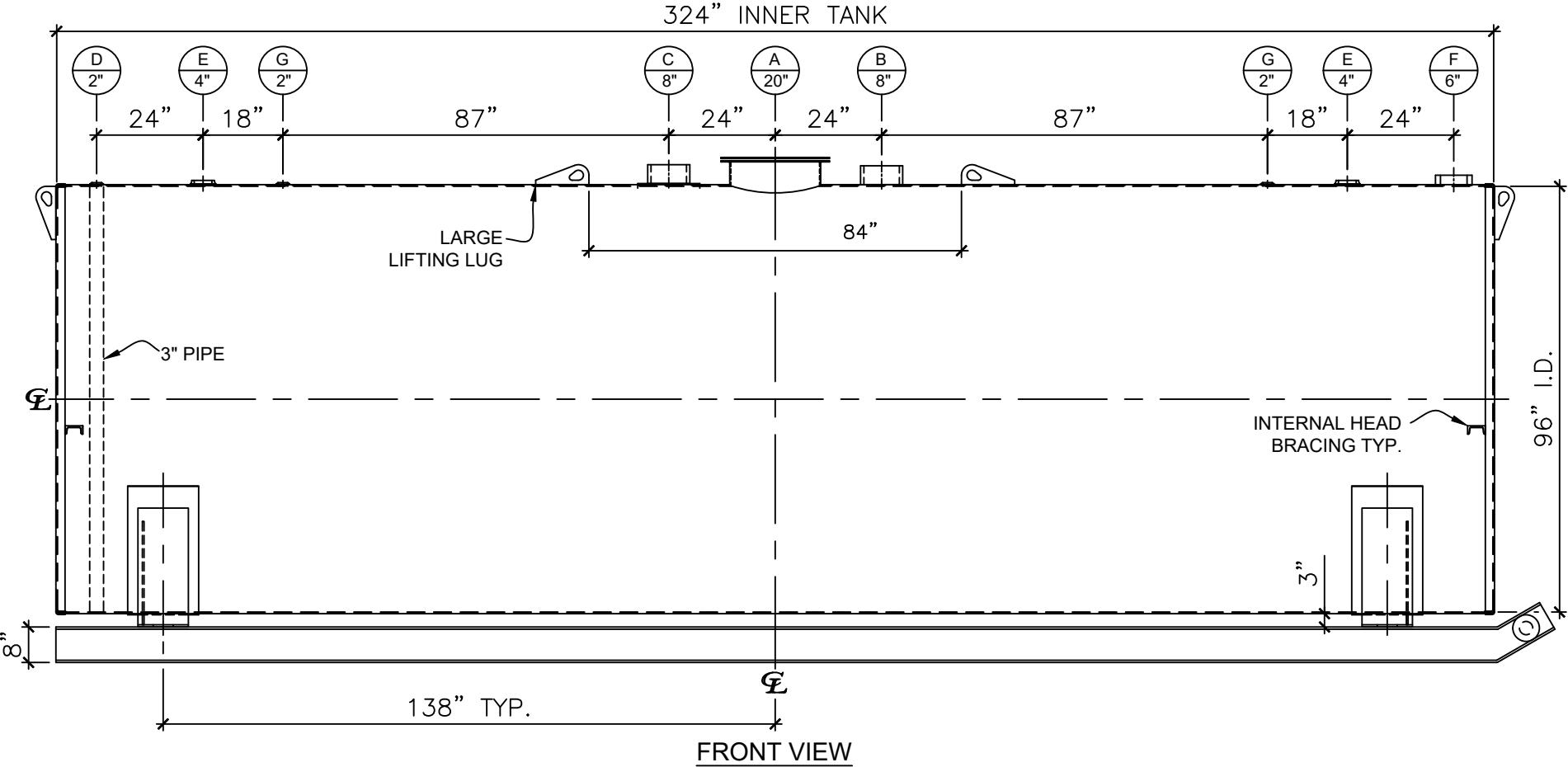
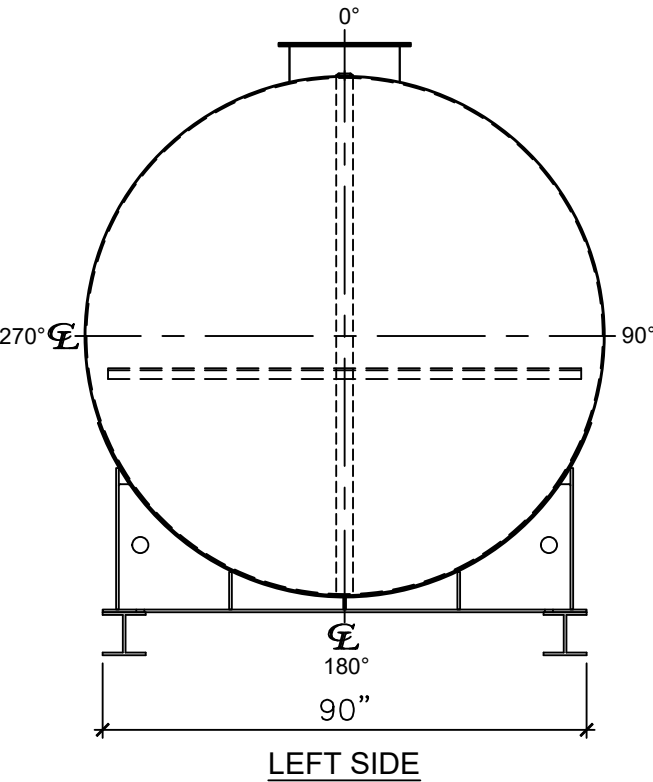


NOZZLE SCHEDULE						
ITEM	SIZE	RATING	TYPE	MATL	REMARKS	NOTES
A	20"	U.L.	M.W.	C.S.	SINGLE PUNCHED	TIGHT BOLTED
B	8"	N.P.T.	H.CPL.	C.S.	PRIMARY	EMERGENCY VENT OPENING
C	8"	N.P.T.	H.CPL.	C.S.	SECONDARY	EMERGENCY VENT OPENING
D	2"	N.P.T.	M.F.	C.S.	-	MONITORING PORT
E	4"	N.P.T.	W.F.	C.S.	-	-
F	6"	N.P.T.	H.CPL.	C.S.	-	-
G	2"	N.P.T.	W.F.	C.S.	-	-



- NOTES:
- A. Material: H.R. Carbon Steel.
  - B. Design Pressure: Atmospheric.
  - C. Design Temperature: Ambient.
  - D. Built & labeled per U.L. spec. #142.
  - E. Exterior: Gray primer included; see Sales Order for top coat.
  - F. All fittings to be protected for shipment.
  - G. Customer to verify nozzle sizes, locations, and quantities.
  - H. Saddles/skids may require shimming or grouting during installation.

APPROVAL FOR CONSTRUCTION SCHEDULE A - MASTER TERMS & CONDITION OF SALE*			SALES ORDER:		WEIGHT (LBS): 17250	
<input type="checkbox"/> APPROVED AS DRAWN.			 Newberry Tanks New Thinking Phone: 870-735-4473			
<input type="checkbox"/> APPROVED WITH NOTED CHANGES. CONSTRUCTION WILL BE SCHEDULED WHEN SIGNED DRAWING AND CONFIRMED ORDER ARE RECEIVED.			DESCRIPTION: 10000 GALLON 96" I.D. x 27'-0" O.A.L. DOUBLE WALL SKID TANK			
SIGNATURE: _____			CUSTOMER: _____		P.O.# _____	
DATE: _____			DATE: 06/08/23		SCALE: _____	
*All pages of this Schedule A are incorporated by reference and are a part of the additional terms of the Master Terms & Conditions of Sale. www.newberrytanks.com/masterterms.pdf			DWG.# NB10000DWS096250		DRAWN BY: WR	
					SHEET 1 OF 1	