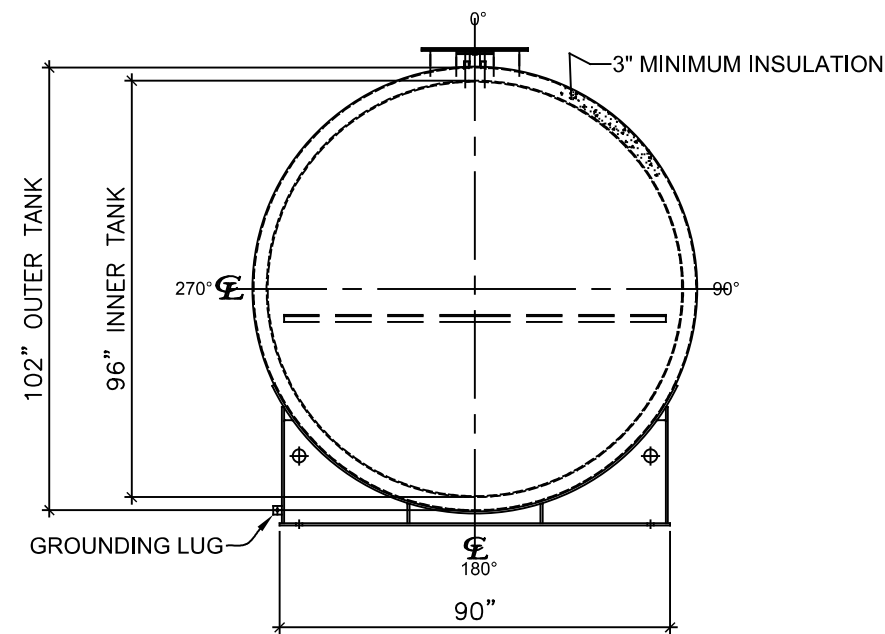
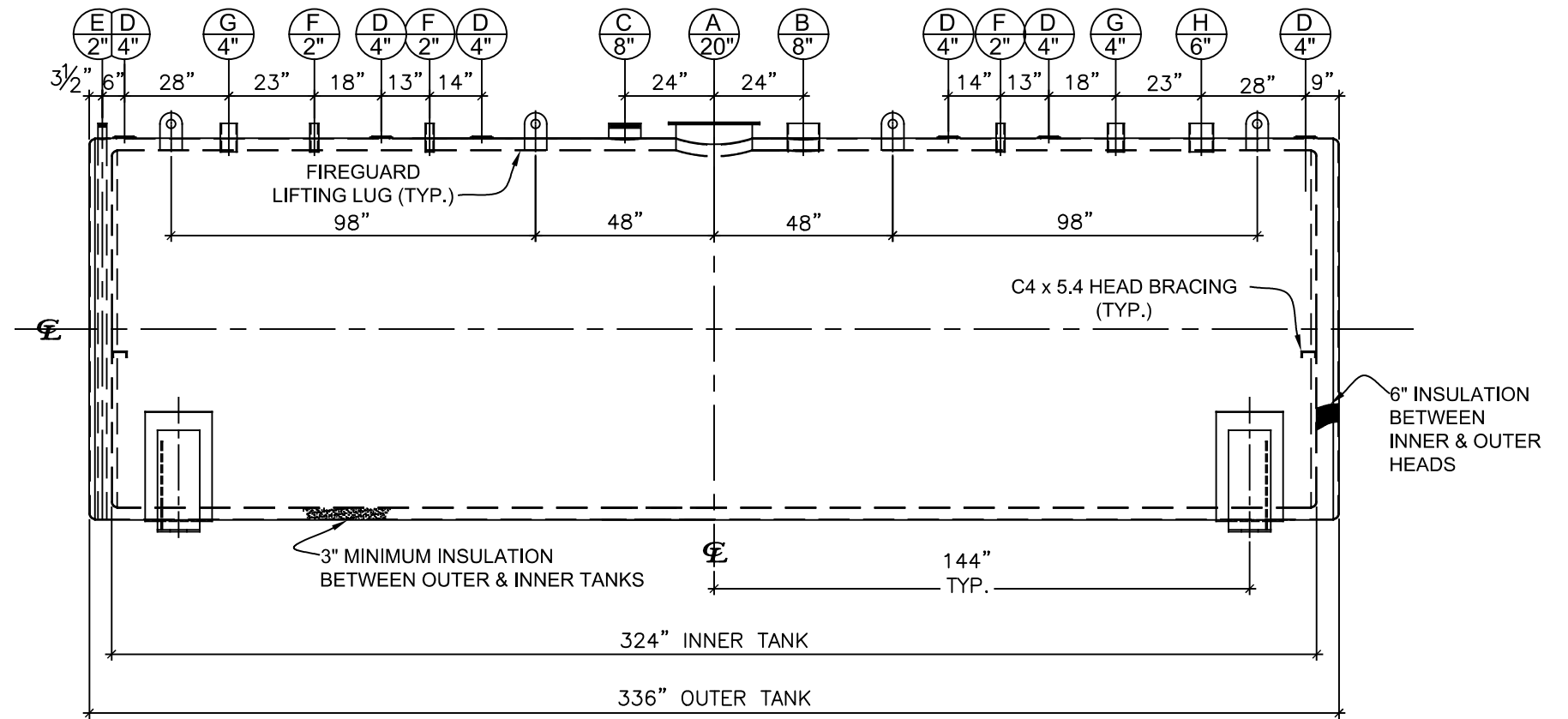


NOZZLE SCHEDULE

| ITEM | SIZE | RATING | TYPE | MATL. | PROJ. IN | PROJ. OUT | REMARKS | NOTES |
|------|------|--------|--------|-------|----------|-----------|----------------|------------------------|
| A | 20" | U.L. | M.W. | C.S. | STD. | STD. | SINGLE PUNCHED | TIGHT BOLTED |
| B | 8" | N.P.T. | CPL. | C.S. | STD. | STD. | PRIMARY | EMERGENCY VENT OPENING |
| C | 8" | N.P.T. | H.CPL. | C.S. | STD. | STD. | SECONDARY | EMERGENCY VENT OPENING |
| D | 4" | N.P.T. | W.F. | C.S. | STD. | STD. | - | INTERSTICE FILL |
| E | 2" | N.P.T. | PIPE | C.S. | STD. | STD. | - | MONITORING PORT |
| F | 2" | N.P.T. | CPL. | C.S. | STD. | STD. | - | - |
| G | 4" | N.P.T. | CPL. | C.S. | STD. | STD. | - | - |
| H | 6" | N.P.T. | CPL. | C.S. | STD. | STD. | - | - |



LEFT SIDE



FRONT VIEW

NOTES:

- A. Material: H.R. Carbon Steel.
- B. Design Pressure: Atmospheric.
- C. Design Temperature: Ambient.
- D. Built & labeled per U.L. #142, #2085 & STI Fireguard Specifications.
- E. Interstice to be filled w/ 3" min. thermal insulation per Fireguard specs.
- F. Exterior: Blast & apply one shop coat WHITE enamel.
- G. All fittings to be labeled and protected for shipment.
- H. Customer to verify nozzle sizes, locations and quantities.
- I. Saddles/skids may require shimming or grouting during installation.

| | | | | | |
|---|--------------|--|-------------------------------|--|--|
| APPROVAL FOR CONSTRUCTION SCHEDULE A - MASTER TERMS & CONDITION OF SALE* | | SALES ORDER: | | WEIGHT (LBS): 29122 | |
| <input type="checkbox"/> APPROVED AS DRAWN. | | | | All units inches unless stated otherwise | |
| <input type="checkbox"/> APPROVED WITH NOTED CHANGES. CONSTRUCTION WILL BE SCHEDULED WHEN SIGNED DRAWING AND CONFIRMED ORDER ARE RECEIVED. | | Phone: 870-735-4473 | | | |
| SIGNATURE: _____ DATE: _____ | | DESCRIPTION: 10000 Gallon 96" I.D. x 27'-0" O.A.L. Fireguard Saddle Tank | | | |
| *All pages of this Schedule A are incorporated by reference and are a part of the additional terms of the Master Terms & Conditions of Sale. www.newberrytanks.com/masterterms.pdf | | CUSTOMER: _____ | | P.O.# _____ | |
| DATE: 3/8/2023 | SCALE: _____ | DWG.# NB10000FGD096250 | DRAWN BY: AJC SHEET 1 OF 1 | | |