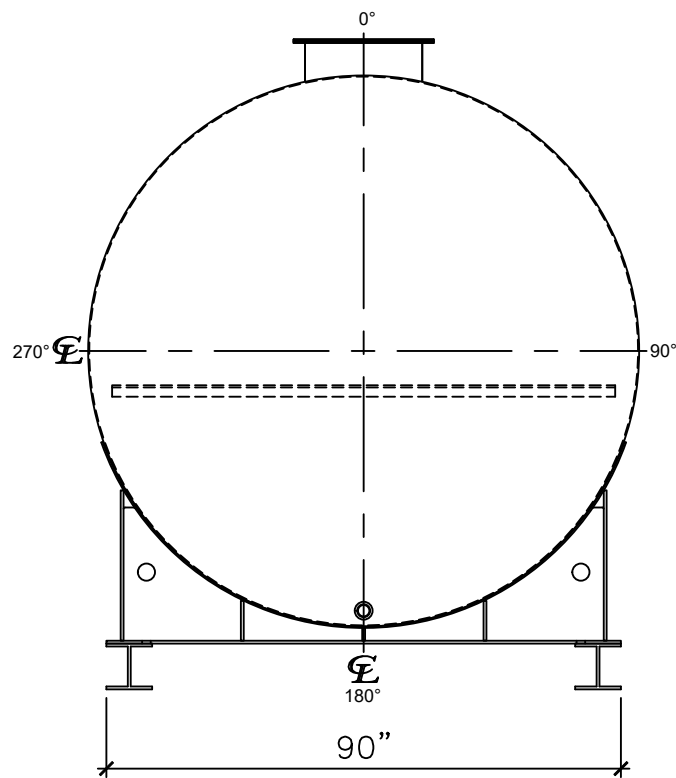
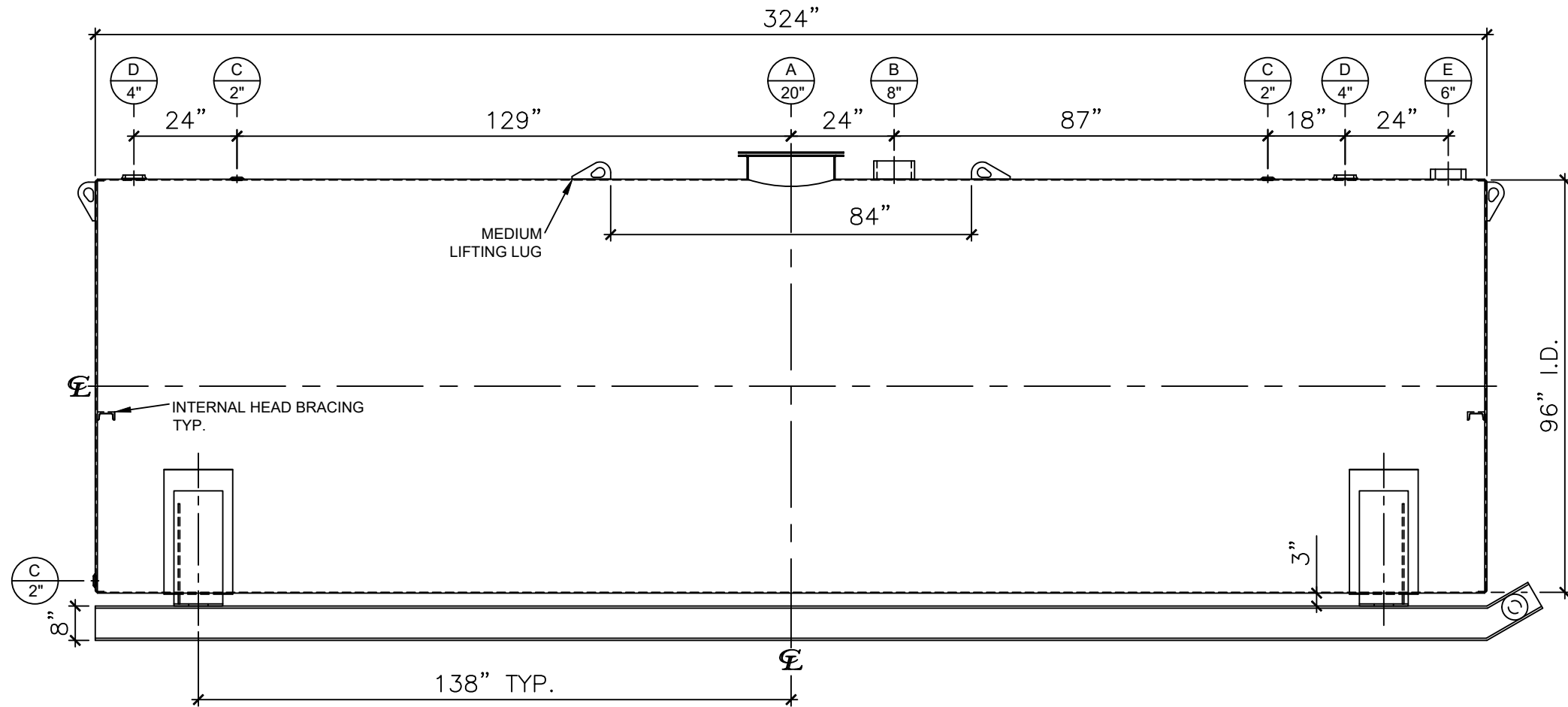


| NOZZLE SCHEDULE | | | | | | | | |
|-----------------|------|--------|--------|------|----------|-----------|----------------|------------------------|
| ITEM | SIZE | RATING | TYPE | MATL | PROJ. IN | PROJ. OUT | REMARKS | NOTES |
| A | 20" | U.L. | M.W. | C.S. | STD. | STD. | SINGLE PUNCHED | TIGHT BOLTED |
| B | 8" | N.P.T. | H.CPL. | C.S. | STD. | STD. | - | EMERGENCY VENT OPENING |
| C | 2" | N.P.T. | W.F. | C.S. | STD. | STD. | - | - |
| D | 4" | N.P.T. | W.F. | C.S. | STD. | STD. | - | - |
| E | 6" | N.P.T. | H.CPL. | C.S. | STD. | STD. | - | - |




LEFT SIDE



FRONT VIEW

- NOTES:**
- A. Material: H.R. Carbon Steel.
 - B. Design Pressure: Atmospheric.
 - C. Design Temperature: Ambient.
 - D. Built & labeled per U.L. spec. #142.
 - E. Exterior: Gray primer included; see Sales Order for top coat.
 - F. All fittings to be protected for shipment.
 - G. Customer to verify nozzle sizes, locations, and quantities.
 - H. Saddles/skids may require shimming or grouting during installation.

| | | | | | |
|---|--|---|--|---------------------|--|
| APPROVAL FOR CONSTRUCTION SCHEDULE A - MASTER TERMS & CONDITION OF SALE* | | SALES ORDER: | | WEIGHT (LBS): 10350 | |
| <input type="checkbox"/> APPROVED AS DRAWN. | |  | | | |
| <input type="checkbox"/> APPROVED WITH NOTED CHANGES. CONSTRUCTION WILL BE SCHEDULED WHEN SIGNED DRAWING AND CONFIRMED ORDER ARE RECEIVED. | | All units inches unless stated otherwise | | | |
| SIGNATURE: _____ | | Phone: 870-735-4473 | | | |
| DATE: _____ | | DESCRIPTION: 10000 GALLON 96" I.D. x 27'-0" O.A.L. SINGLE WALL SKID TANK | | | |
| *All pages of this Schedule A are incorporated by reference and are a part of the additional terms of the Master Terms & Conditions of Sale. www.newberrytanks.com/masterterms.pdf | | CUSTOMER: _____ | | P.O.# _____ | |
| | | DATE: 06/07/23 | | DRAWN BY: WR | |
| | | SCALE: _____ | | SHEET 1 OF 1 | |
| | | DWG.# NB10000SWS096250 | | | |