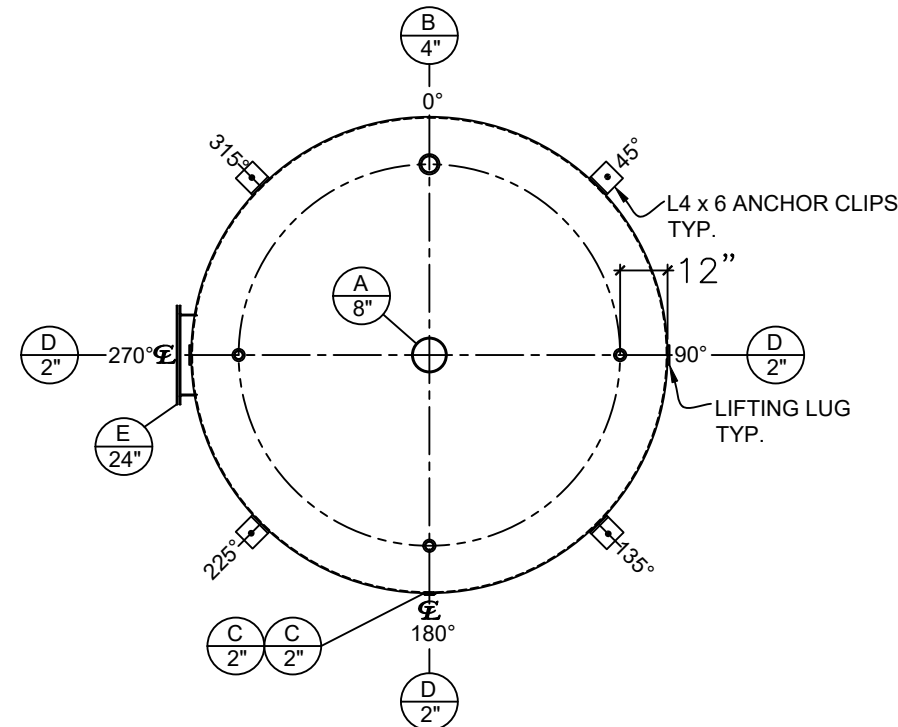


FRONT VIEW


NOZZLE SCHEDULE								
ITEM	SIZE	RATING	TYPE	MATL	PROJ. IN	PROJ. OUT	REMARKS	NOTES
A	8"	N.P.T.	H.CPL.	C.S.	STD.	STD.	-	EMERGENCY VENT OPENING
B	4"	N.P.T.	CPL.	C.S.	STD.	STD.	-	-
C	2"	N.P.T.	W.F.	C.S.	STD.	STD.	-	-
D	2"	N.P.T.	CPL.	C.S.	STD.	STD.	-	-
E	24"	N.P.T.	M.W.	C.S.	STD.	STD.	TIGHT BOLTED	DOUBLE PUNCHED



PLAN VIEW

NOTES:

- A. Material: H.R. Carbon Steel.
- B. Design Pressure: Atmospheric.
- C. Design Temperature: Ambient.
- D. Built & labeled per U.L. spec. #142.
- E. Exterior: one coat gray primer.
- F. All fittings to be protected for shipment.
- G. Customer to verify nozzle sizes, locations, and quantities.

APPROVAL FOR CONSTRUCTION SCHEDULE A - MASTER TERMS & CONDITION OF SALE*		SALES ORDER:		WEIGHT (LBS): 8320	
<input type="checkbox"/> APPROVED AS DRAWN.					
<input type="checkbox"/> APPROVED WITH NOTED CHANGES. CONSTRUCTION WILL BE SCHEDULED WHEN SIGNED DRAWING AND CONFIRMED ORDER ARE RECEIVED.		All units inches unless stated otherwise			
SIGNATURE: _____		Phone: 870-735-4473			
DATE: _____		DESCRIPTION: 10,000 GALLON 120" I.D. x 17'-0" SHELL HEIGHT SINGLE WALL VERTICAL TANK			
*All pages of this Schedule A are incorporated by reference and are a part of the additional terms of the Master Terms & Conditions of Sale. www.newberrytanks.com/masterterms.pdf		CUSTOMER: _____		P.O.# _____	
DATE: 06/06/23		SCALE: _____		DRAWN BY: WR	
DWG.# NB10000SWV12007G		SHEET 1 OF 1			