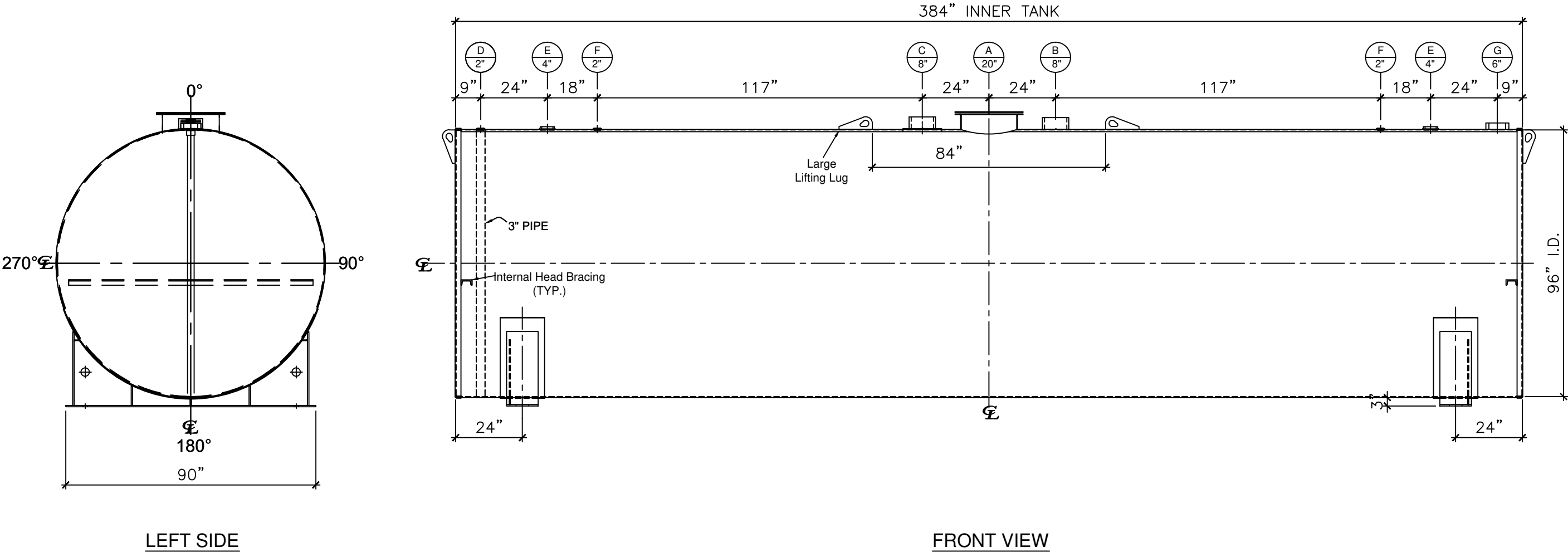



NOZZLE SCHEDULE								
ITEM	SIZE	RATING	TYPE	MATL	PROJ. IN	PROJ. OUT	REMARKS	NOTES
A	20"	U.L.	MANWAY	C.S.	STD.	STD.	SINGLE PUNCHED	TIGHT BOLTED
B	8"	N.P.T.	H. CPL.	C.S.	STD.	STD.	PRIMARY	EMERGENCY VENT OPENING
C	8"	N.P.T.	H. CPL.	C.S.	STD.	STD.	SECONDARY	EMERGENCY VENT OPENING
D	2"	N.P.T.	M.F.	C.S.	STD.	STD.	-	MONITORING PORT
E	4"	N.P.T.	W.F.	C.S.	STD.	STD.	-	-
F	2"	N.P.T.	W.F.	C.S.	STD.	STD.	-	-
G	6"	N.P.T.	H.CPL.	C.S.	STD.	STD.	-	-



- NOTES:
- A. Quantity:
  - B. Material: H.R. Carbon Steel.
  - C. Design Pressure: Atmospheric.
  - D. Design Temperature: Ambient.
  - E. Built & labeled per U.L. #142 & SwRI 97-04 specifications.
  - F. Exterior: Blast & apply one shop coat WHITE enamel.
  - G. All fittings to be protected for shipment.
  - H. Customer to verify nozzle sizes, locations and quantities.
  - I. Saddles/skids may require shimming or grouting during installation.

\*All pages of this Schedule A are incorporated by reference and are a part of the additional terms of the Master Terms & Conditions of Sale.  
[www.newberrytanks.com/masterterms.pdf](http://www.newberrytanks.com/masterterms.pdf)

APPROVAL FOR CONSTRUCTION SCHEDULE A - MASTER TERMS & CONDITIONS OF SALE*		SALES ORDER#	
<input type="checkbox"/> APPROVED AS DRAWN.		<div> Phone: 870-735-4473 Fax: 870-735-3982</div>	
<input type="checkbox"/> APPROVED WITH NOTED CHANGES, CONSTRUCTION WILL BE SCHEDULED WHEN SIGNED DRAWING AND CONFIRMED ORDER ARE RECEIVED.			
SIGNATURE: _____		VESSEL DESCRIPTION: 12000 Gallon 96" I.D. x 32'-0" O.A.L. Double Wall Flameshield Tank	
DATE: _____		CUSTOMER: _____ P.O.# _____	
		DATE: _____	SCALE: _____
		DWG.# NB12000FSD096250	DRAWN BY: TC CHKD. BY: _____

This drawing may contain CONFIDENTIAL information and is intended only for the use of the specific individual(s) to which it is addressed.