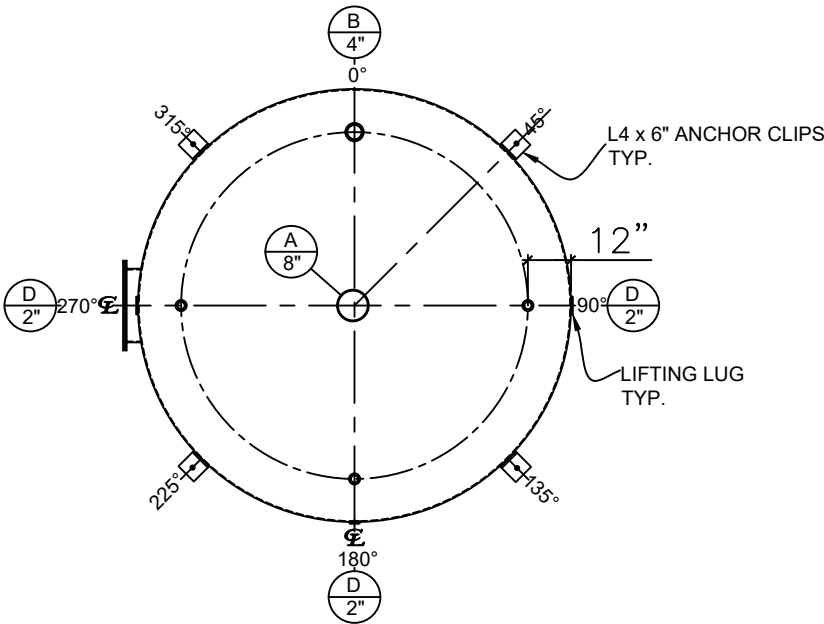


FRONT VIEW

NOZZLE SCHEDULE								
ITEM	SIZE	RATING	TYPE	MATL	PROJ. IN	PROJ. OUT	REMARKS	NOTES
A	8"	N.P.T.	H. CPL.	C.S.	STD.	STD.	-	EMERGENCY VENT OPENING
B	4"	N.P.T.	CPL.	C.S.	STD.	STD.	-	-
C	2"	N.P.T.	W.F.	C.S.	STD.	STD.	-	-
D	2"	N.P.T.	CPL.	C.S.	STD.	STD.	-	-
E	24"	N.P.T.	MANWAY	C.S.	STD.	STD.	TIGHT BOLTED	DOUBLE PUNCHED



PLAN VIEW

NOTES:

- A. Material: H.R. Carbon Steel.
- B. Design Pressure: Atmospheric.
- C. Design Temperature: Ambient.
- D. Built & labeled per U.L. spec. #142.
- E. Exterior: one coat gray primer.
- F. All fittings to be protected for shipment.
- G. Customer to verify nozzle sizes, locations and quantities.

APPROVAL FOR CONSTRUCTION
SCHEDULE A - MASTER TERMS &
CONDITION OF SALE*

☐ APPROVED AS DRAWN.


☐ APPROVED WITH NOTED CHANGES.
CONSTRUCTION WILL BE SCHEDULED
WHEN SIGNED DRAWING AND
CONFIRMED ORDER ARE RECEIVED.

SIGNATURE: _____

DATE: _____

*All pages of this Schedule A are incorporated by
reference and are a part of the additional terms of
the Master Terms & Conditions of Sale.
www.newberrytanks.com/masterterms.pdf

SALES ORDER:-



Newberry Tanks
New Thinking

Phone: 870-735-4473

DESCRIPTION:
12,000 Gallon 120" I.D. x 20'-6" Shell Height Single Wall Vertical Tank

CUSTOMER:

P.O.#

DATE:
4/6/2023

SCALE:

DWG.#
NB12000SWV12007G

DRAWN BY: AJC
SHEET 1 OF 1

WEIGHT (LBS): 9500

All units inches
unless stated
otherwise