

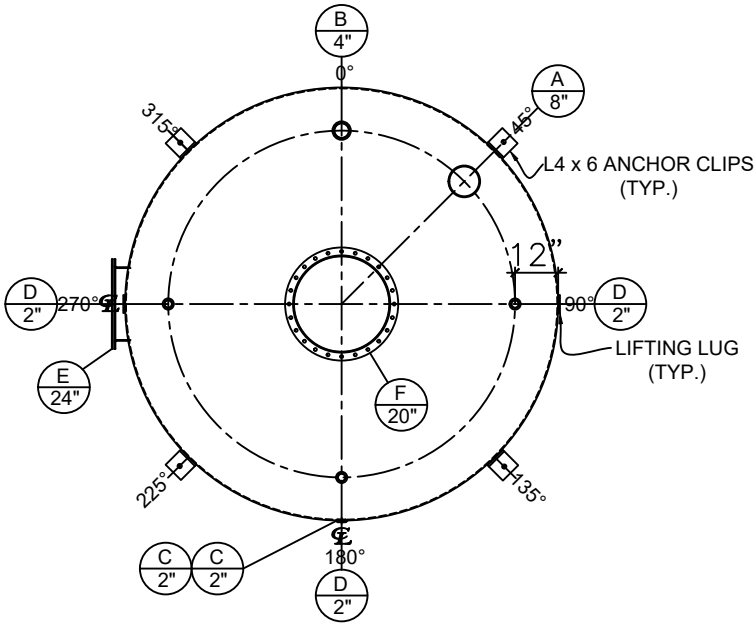
FRONT VIEW

NOTES:


- A. Material: H.R. Carbon Steel.
- B. Design Pressure: Atmospheric.
- C. Design Temperature: Ambient.
- D. Built & labeled per U.L. spec. #142.
- E. Exterior: one coat gray primer.
- F. All fittings to be protected for shipment.
- G. Customer to verify nozzle sizes, locations and quantities.

NOZZLE SCHEDULE

| ITEM | SIZE | RATING | TYPE | MATL | PROJ. IN | PROJ. OUT | REMARKS | NOTES |
|------|------|--------|---------|------|----------|-----------|--------------|------------------------|
| A | 8" | N.P.T. | H. CPL. | C.S. | STD. | STD. | - | EMERGENCY VENT OPENING |
| B | 4" | N.P.T. | CPL. | C.S. | STD. | STD. | - | - |
| C | 2" | N.P.T. | W.F. | C.S. | STD. | STD. | - | - |
| D | 2" | N.P.T. | CPL. | C.S. | STD. | STD. | - | - |
| E | 24" | N.P.T. | MANWAY | C.S. | STD. | STD. | TIGHT BOLTED | DOUBLE PUNCHED |
| F | 20" | N.P.T. | MANWAY | C.S. | STD. | STD. | TIGHT BOLTED | SINGLE PUNCHED |



PLAN VIEW

| | | | | | | |
|---|--|--------|---|---------------|---------------------|--------------|
| APPROVAL FOR CONSTRUCTION SCHEDULE A - MASTER TERMS & CONDITION OF SALE* | | | SALES ORDER:- | | WEIGHT (LBS): 11750 | |
| <input type="checkbox"/> APPROVED AS DRAWN. | | | <div>Newberry Tanks New Thinking</div> | | | |
| <input type="checkbox"/> APPROVED WITH NOTED CHANGES. CONSTRUCTION WILL BE SCHEDULED WHEN SIGNED DRAWING AND CONFIRMED ORDER ARE RECEIVED. | | | All units inches unless stated otherwise | | | |
| SIGNATURE: _____ | | | Phone: 870-735-4473 | | | |
| DATE: _____ | | | DESCRIPTION: 15,000 Gallon 120" I.D. x 26'-0" Shell Height Single Wall Vertical Tank | | | |
| *All pages of this Schedule A are incorporated by reference and are a part of the additional terms of the Master Terms & Conditions of Sale. www.newberrytanks.com/masterterms.pdf | | | CUSTOMER: | | P.O.# | |
| DATE: 4/6/2023 | | SCALE: | DWG.# NB15000SWV120250 | DRAWN BY: AJC | | SHEET 1 OF 1 |