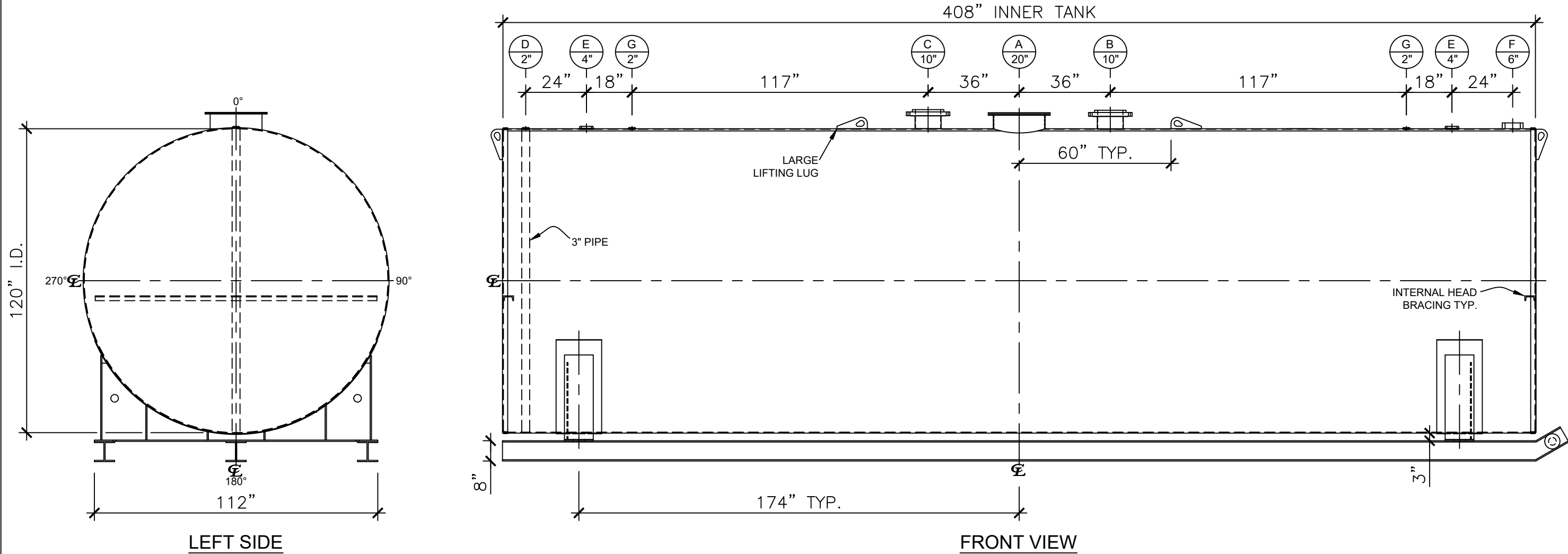



NOZZLE SCHEDULE						
ITEM	SIZE	RATING	TYPE	MATL	REMARKS	NOTES
A	20"	U.L.	M.W.	C.S.	SINGLE PUNCHED	TIGHT BOLTED
B	10"	U.L.	ADPT.	C.S.	PRIMARY	EMERGENCY VENT OPENING
C	10"	U.L.	ADPT.	C.S.	SECONDARY	EMERGENCY VENT OPENING
D	2"	N.P.T.	M.F.	C.S.	-	MONITORING PORT
E	4"	N.P.T.	W.F.	C.S.	-	-
F	6"	N.P.T.	H.CPL.	C.S.	-	-
G	2"	N.P.T.	W.F.	C.S.	-	-



- NOTES:**
- A. Material: H.R. Carbon Steel.
 - B. Design Pressure: Atmospheric.
 - C. Design Temperature: Ambient.
 - D. Built & labeled per U.L. #142.
 - E. Exterior: Gray primer included; see Sales Order for top coat.
 - F. All fittings to be protected for shipment.
 - G. Customer to verify nozzle sizes, locations, and quantities.
 - H. Saddles/skids may require shimming or grouting during installation.

<div>APPROVAL FOR CONSTRUCTION SCHEDULE A - MASTER TERMS & CONDITION OF SALE*</div> <div><input type="checkbox"/> APPROVED AS DRAWN.</div> <div><input type="checkbox"/> APPROVED WITH NOTED CHANGES. CONSTRUCTION WILL BE SCHEDULED WHEN SIGNED DRAWING AND CONFIRMED ORDER ARE RECEIVED.</div> <div>SIGNATURE: _____</div> <div>DATE: _____</div> <div><small>*All pages of this Schedule A are incorporated by reference and are a part of the additional terms of the Master Terms & Conditions of Sale. www.newberrytanks.com/masterterms.pdf</small></div>				<div>SALES ORDER:</div> <div><div>Newberry Tanks New Thinking</div><div>All units inches unless stated otherwise</div></div> <div>Phone: 870-735-4473</div> <div>DESCRIPTION: 20000 GALLON 120" I.D. x 34'-0" O.A.L. DOUBLE WALL SKID TANK</div> <div>CUSTOMER: _____ P.O.# _____</div> <div>DATE: 08/29/23 SCALE: _____ DWG.# NB20000DWS120250 DRAWN BY: WR</div> <div>SHEET 1 OF 1</div>			
--	--	--	--	---	--	--	--