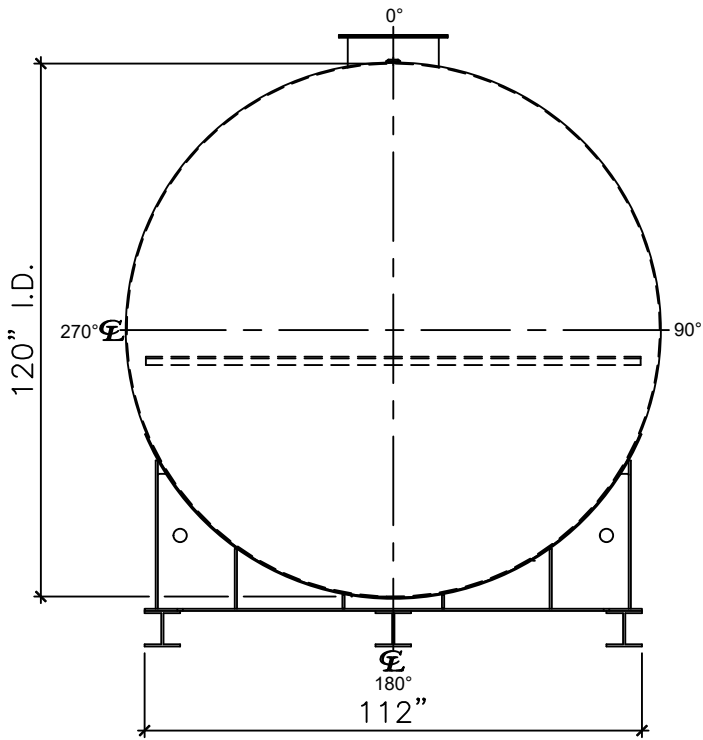
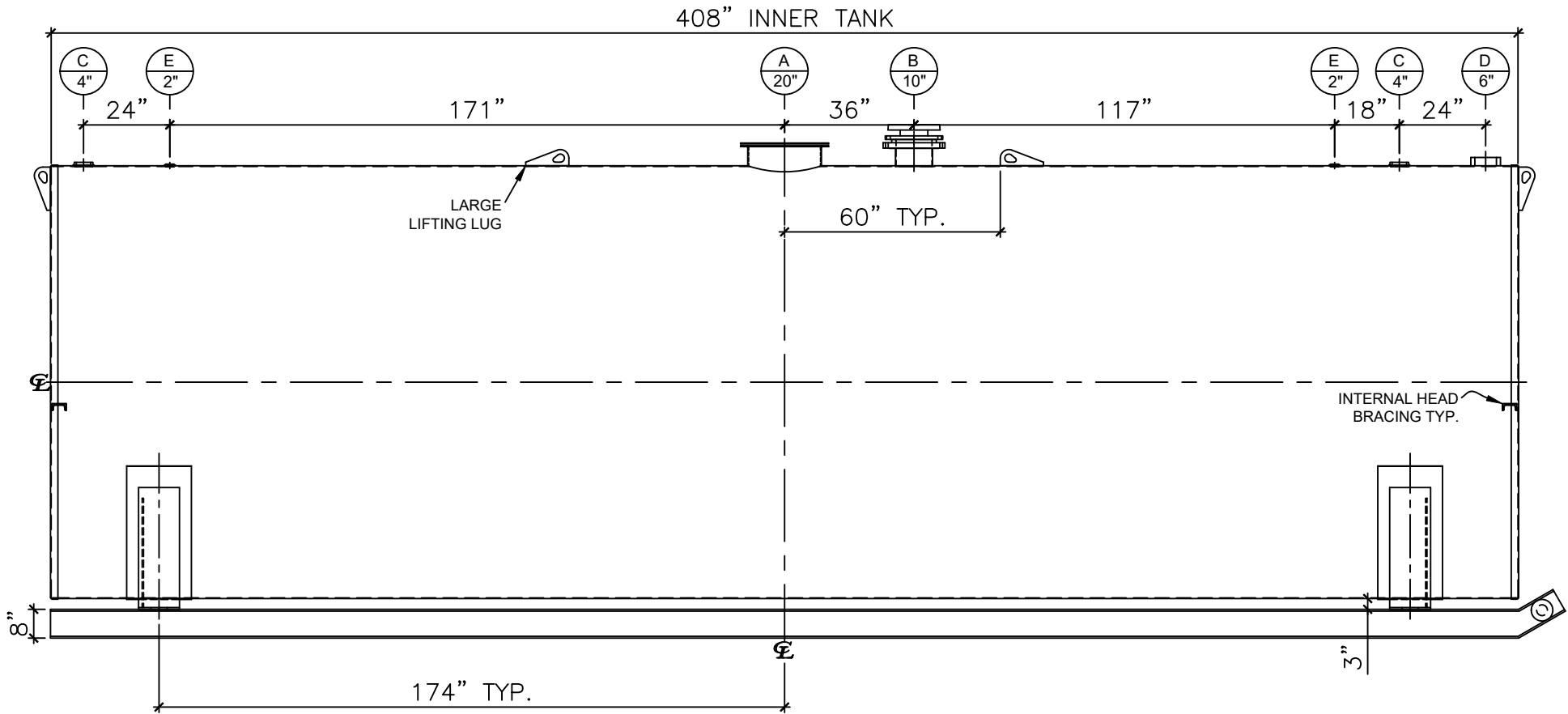


NOZZLE SCHEDULE						
ITEM	SIZE	RATING	TYPE	MATL	REMARKS	NOTES
A	20"	U.L.	M.W.	C.S.	SINGLE PUNCHED	TIGHT BOLTED
B	10"	U.L.	ADPT.	C.S.	PRIMARY	EMERGENCY VENT OPENING
C	4"	N.P.T.	W.F.	C.S.	-	-
D	6"	N.P.T.	H.CPL.	C.S.	-	-
E	2"	N.P.T.	W.F.	C.S.	-	-




LEFT SIDE



FRONT VIEW

- NOTES:
- A. Material: H.R. Carbon Steel.
 - B. Design Pressure: Atmospheric.
 - C. Design Temperature: Ambient.
 - D. Built & labeled per U.L. #142.
 - E. Exterior: Gray primer included; see Sales Order for top coat.
 - F. All fittings to be protected for shipment.
 - G. Customer to verify nozzle sizes, locations, and quantities.
 - H. Saddles/skids may require shimming or grouting during installation.

APPROVAL FOR CONSTRUCTION SCHEDULE A - MASTER TERMS & CONDITION OF SALE*		SALES ORDER:	
<input type="checkbox"/> APPROVED AS DRAWN.		 All units inches unless stated otherwise	
<input type="checkbox"/> APPROVED WITH NOTED CHANGES. CONSTRUCTION WILL BE SCHEDULED WHEN SIGNED DRAWING AND CONFIRMED ORDER ARE RECEIVED.		Phone: 870-735-4473	
SIGNATURE: _____		DESCRIPTION: 20000 GALLON 120" I.D. x 34'-0" O.A.L. SINGLE WALL SKID TANK	
DATE: _____		CUSTOMER: _____	P.O.# _____
*All pages of this Schedule A are incorporated by reference and are a part of the additional terms of the Master Terms & Conditions of Sale. www.newberrytanks.com/masterterms.pdf		DATE: 08/30/23	DRAWN BY: WR
		SCALE: _____	SHEET 1 OF 1
		DWG.# NB20000SWS120250	